

**TOURIST ACCOMMODATION, SOUTH AUSTRALIA,
MARCH QUARTER 1994**

MAIN FEATURES

MARCH QUARTER 1994
COMPARED WITH
MARCH QUARTER 1993

HOTELS, MOTELS AND GUEST HOUSES

- Rooms available decreased by 1.1 per cent from 10,739 to 10,625 and bed spaces fell by 0.7 per cent from 30,093 to 29,876.
- Room nights occupied increased by 5.4 per cent from 453,181 to 477,807 overall with four star rated establishments and five star rated establishments recording increases of 9.7 per cent and 20.5 per cent respectively.
- The room occupancy rate overall rose from 47.0 per cent to 50.0 per cent with rises ranging from 1.2 percentage points for two star rated establishments to 11.1 percentage points for five star rated establishments. Regional variations ranged from a rise of 5.8 percentage points for Adelaide Statistical Division to a fall of 3.3 percentage points for South East Statistical Division. The biennial Adelaide Festival of Arts was held in March 1994.
- Guest nights increased by 4.4 per cent from 778,564 to 813,146 and the bed occupancy rate increased from 28.8 per cent to 30.3 per cent.
- Guest arrivals increased by 9.6 per cent from 399,040 to 437,448, while the average length of stay dropped from 2.0 days to 1.9 days overall.
- Takings from accommodation increased by 8.7 per cent from \$32.2m to \$35.0m with average takings per room night occupied rising by 3.1 per cent from \$71 to \$73.

HOLIDAY FLATS, UNITS AND HOUSES

- The number of units, etc. available for short-term letting increased from 1,313 to 1,321 while unit nights occupied increased by 2.6 per cent from 58,970 to 60,475.
- The unit occupancy rate consequently rose from 49.9 per cent to 50.9 per cent.
- Unit lettings increased by 1.6 per cent from 10,097 to 10,258 and the average length of stay increased from 5.8 days to 5.9 days.
- Accommodation takings increased by 8.7 per cent from \$3.3m to \$3.5m while the average takings per unit night occupied increased by 6.0 per cent from \$55 to \$59.

CARAVAN PARKS

- Caravan park capacity available decreased by 1.3 per cent from 24,466 to 24,142 powered and unpowered sites and cabins, etc. of which 1,982 sites, etc. (8.2 per cent) were occupied by long-term residents, 1,542 sites (6.4 per cent) were permanently reserved but only casually occupied by their tenants and an average of 3,768 sites (15.6 per cent) were occupied by other short-term guests.
- Site nights occupied increased by 3.1 per cent from 636,370 to 656,243 and the site occupancy rate thus rose by 1.3 percentage points from 28.9 per cent to 30.2 per cent.
- Accommodation takings increased by 9.0 per cent from \$7.5m to \$8.2m with the average takings per site night occupied remaining at \$12.

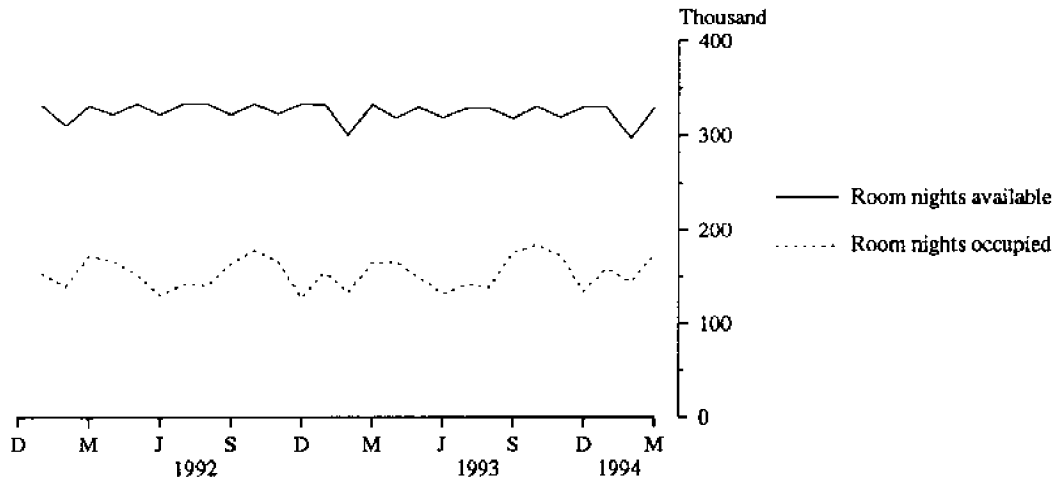
VISITOR HOSTELS

- Bed spaces available increased by 6.5 per cent from 1,970 to 2,098.
- Guest nights occupied rose by 13.5 per cent from 59,084 to 67,089 and the bed occupancy rate increased from 33.6 per cent to 35.5 per cent.
- Guest arrivals fell from 32,142 to 31,479 but the average length of stay increased from 1.8 days to 2.1 days.
- Accommodation takings rose from \$0.60m to \$0.67m while average takings per guest night remained at \$10.

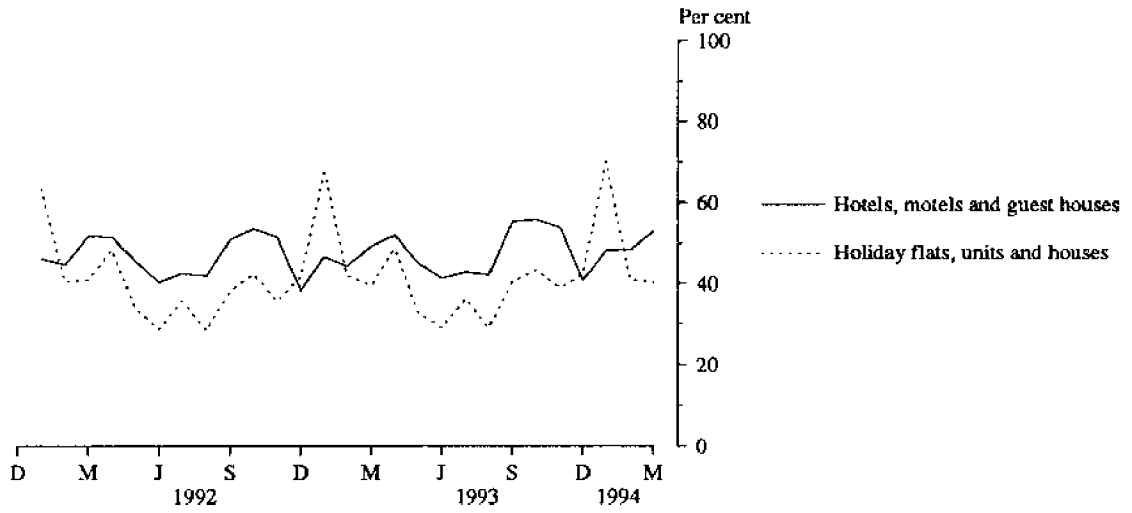
INQUIRIES

- *for further information about statistics in this publication and the availability of related unpublished statistics, contact Brian Hay on 008 077304 or any ABS office.*
 - *for information about other ABS statistics and services, refer to the back page of this publication.*
- *****

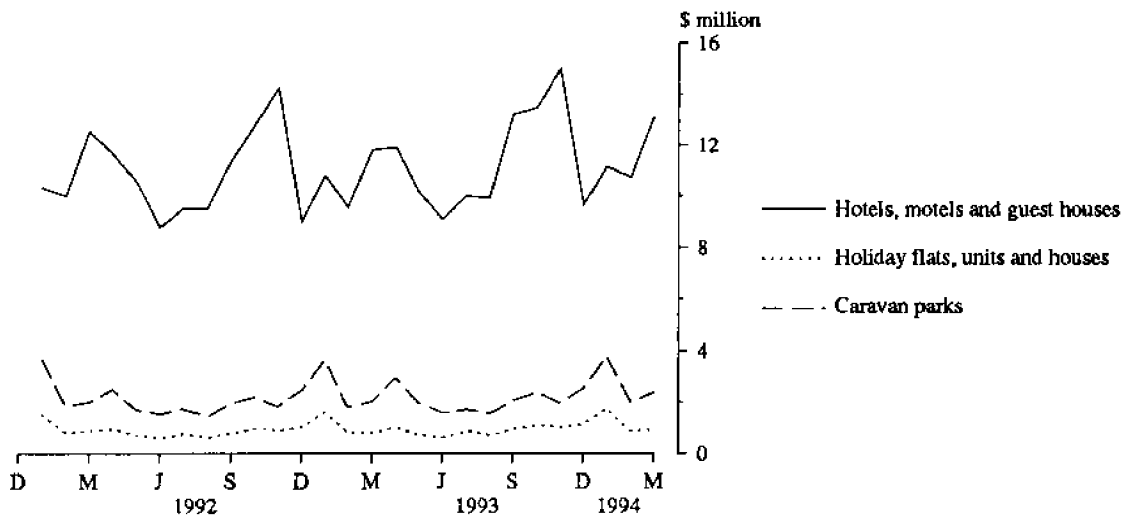
**MONTHLY ROOM NIGHTS AVAILABLE AND OCCUPIED:
HOTELS, MOTELS AND GUEST HOUSES,
SOUTH AUSTRALIA**



**MONTHLY OCCUPANCY RATES,
SOUTH AUSTRALIA**



**MONTHLY TAKINGS FROM ACCOMMODATION,
SOUTH AUSTRALIA**



CONTENTS

<i>Table</i>		<i>Page</i>
..	Main features	1
..	Diagrams	2
1	Summary of hotels, motels and guest houses with facilities, Adelaide Statistical Division and South Australia	4
2	Summary of caravan parks, Adelaide Statistical Division and South Australia	5
3	Summary of holiday flats, units and houses, South Australia	6
4	Summary of visitor hostels, South Australia	6
5	Hotels, motels and guest houses with facilities by star grading, South Australia	7
6	Hotels, motels and guest houses with facilities by statistical division, South Australia	8
7A	Licensed hotels and motels and guest houses with facilities: Statistical subdivisions and selected statistical local areas, South Australia	10
7B	Hotels, motels and guest houses with facilities: Statistical divisions and selected subdivisions and statistical local areas, South Australia	12
8	Holiday flats, units and houses: Statistical divisions and selected subdivisions, South Australia	14
9	Caravan parks by statistical division, South Australia	16
10	Caravan parks: Statistical divisions and selected subdivisions and statistical local areas, South Australia	18
11	Visitor hostels by statistical division, South Australia	20
..	Explanatory Notes	21
..	Appendix: Statistical divisions, subdivisions and statistical local areas, South Australia	24
..	Reference map – statistical divisions and subdivisions, South Australia	26

TABLE 1 — SUMMARY OF HOTELS, MOTELS AND GUEST HOUSES WITH FACILITIES, SOUTH AUSTRALIA (a)

Particulars	Unit	Quarter ended				Year ended			
		December 1992	March 1993	June 1993	September 1993	December 1993	March 1994	March 1993	March 1994
ADELAIDE STATISTICAL DIVISION — TOTAL HOTELS, MOTELS AND GUEST HOUSES WITH FACILITIES									
Establishments	No.	123	122	120	118	114	114
Guest rooms	No.	5,428	5,411	5,355	5,351	5,379	5,382
Bed spaces	No.	14,508	14,460	14,130	14,171	14,278	14,284
Employment (persons)	No.	4,682	4,625	4,470	4,661	4,575	4,383
Room nights occupied	No.	275,826	262,410	250,832	267,684	289,899	288,721	1,031,225	1,097,136
Room occupancy rate	per cent	55.3	53.9	51.5	54.4	58.6	59.7	52.3	56.0
Guest nights	No.	452,155	435,075	401,917	424,563	472,171	474,936	1,666,327	1,773,587
Bed occupancy rate	per cent	33.9	33.4	31.3	32.6	36.0	37.0	31.3	34.2
Guest arrivals	No.	192,820	190,646	183,207	192,246	214,341	225,382	734,026	815,176
Average length of stay	days	2.3	2.3	2.2	2.2	2.2	2.1	2.3	2.2
Takings from accommodation	\$'000	24,985	21,534	20,222	22,633	26,696	24,291	85,938	93,843
SOUTH AUSTRALIA — LICENSED HOTELS WITH FACILITIES									
Establishments	No.	125	121	121	121	114	113
Guest rooms	No.	4,573	4,538	4,535	4,520	4,479	4,453
Bed spaces	No.	11,178	11,038	11,024	11,044	10,929	10,913
Employment (persons)	No.	5,213	5,175	4,988	5,196	5,134	4,928
Room nights occupied	No.	202,285	184,219	183,166	199,691	209,975	201,071	757,729	793,903
Room occupancy rate	per cent	48.1	45.1	44.4	48.0	51.0	50.3	45.8	48.4
Guest nights	No.	312,416	286,908	279,838	303,453	322,018	309,616	1,154,446	1,214,925
Bed occupancy rate	per cent	30.4	28.9	27.9	29.9	32.0	31.6	28.2	30.3
Guest arrivals	No.	148,573	139,321	142,377	152,231	157,554	160,333	577,918	612,495
Average length of stay	days	2.1	2.1	2.0	2.0	2.0	1.9	2.0	2.0
Takings from accommodation	\$'000	18,277	15,237	14,594	16,861	19,385	17,328	62,594	68,169
SOUTH AUSTRALIA — MOTELS AND GUEST HOUSES WITH FACILITIES									
Establishments	No.	242	242	239	236	228	229
Guest rooms	No.	6,190	6,201	6,097	6,084	6,171	6,172
Bed spaces	No.	19,023	19,055	18,609	18,653	18,935	18,963
Employment (persons)	No.	2,498	2,419	2,319	2,428	2,490	2,400
Room nights occupied	No.	270,585	268,962	263,474	256,703	282,651	276,736	1,063,353	1,079,564
Room occupancy rate	per cent	47.5	48.3	47.5	45.9	49.8	49.8	46.9	48.3
Guest nights	No.	485,658	491,656	463,249	440,431	502,482	503,530	1,890,601	1,909,692
Bed occupancy rate	per cent	27.8	28.7	27.4	25.7	28.9	29.5	27.2	27.9
Guest arrivals	No.	264,922	259,719	252,937	253,797	284,527	277,115	1,025,603	1,068,376
Average length of stay	days	1.8	1.9	1.8	1.7	1.8	1.8	1.8	1.8
Takings from accommodation	\$'000	17,785	16,973	16,581	16,272	18,711	17,679	67,116	69,242
SOUTH AUSTRALIA — TOTAL HOTELS, MOTELS AND GUEST HOUSES WITH FACILITIES									
Establishments	No.	367	363	360	357	342	342
Guest rooms	No.	10,763	10,739	10,632	10,604	10,650	10,625
Bed spaces	No.	30,201	30,093	29,633	29,697	29,864	29,876
Employment (persons)	No.	7,711	7,594	7,307	7,624	7,624	7,328
Room nights occupied	No.	472,870	453,181	446,640	456,394	492,626	477,807	1,821,082	1,873,467
Room occupancy rate	per cent	47.8	47.0	46.2	46.8	50.3	50.0	46.4	48.3
Guest nights	No.	798,074	778,564	743,087	743,884	824,500	813,146	3,045,047	3,124,617
Bed occupancy rate	per cent	28.7	28.8	27.6	27.2	30.0	30.3	27.5	28.8
Guest arrivals	No.	413,495	399,040	395,314	406,028	442,081	437,448	1,603,521	1,680,871
Average length of stay	days	1.9	2.0	1.9	1.8	1.9	1.9	1.9	1.9
Takings from accommodation	\$'000	36,063	32,210	31,175	33,133	38,096	35,007	129,710	137,411

(a) From December quarter 1993, establishments with fewer than 5 rooms have been formally excluded from the scope of this collection. See Explanatory Note 2 (page 21).

TABLE 2 — SUMMARY OF CARAVAN PARKS, SOUTH AUSTRALIA

Particulars	Unit	Quarter ended				Year ended			
		December 1992	March 1993	June 1993	September 1993	December 1993	March 1994	March 1993	March 1994
ADELAIDE STATISTICAL DIVISION — TOTAL CARAVAN PARKS									
Establishments	No.	26	26	26	26	26	26
Capacity									
On-site vans	No.	260	276	260	259	261	261
Other powered sites	No.	2,721	2,615	2,634	2,646	2,646	2,650
Unpowered sites	No.	387	398	418	418	410	405
Cabins, etc.	No.	360	360	367	369	369	369
Total capacity	No.	3,728	3,649	3,679	3,692	3,686	3,685
Sites occupied by long-term guests	No.	1,096	1,109	1,102	1,109	1,063	1,085
Other sites permanently reserved (a)	No.	24	21	34	30	31	32
Employment (persons)	No.	164	164	165	153	160	157
Site nights occupied (a)	No.	172,957	185,434	155,086	150,227	166,949	188,646	(a)	660,908
Site occupancy rate (a)	per cent	50.4	56.5	46.3	44.2	49.2	56.9	(a)	49.1
Takings from accommodation	\$'000	2,238	2,418	1,863	1,730	2,337	2,749	8,254	8,679
SOUTH AUSTRALIA — SHORT-TERM CARAVAN PARKS									
Establishments	No.	173	171	170	168	167	166
Capacity									
On-site vans	No.	982	954	935	934	939	934
Other powered sites	No.	12,374	12,093	12,089	12,021	11,994	11,908
Unpowered sites	No.	5,919	5,881	5,798	5,810	5,736	5,510
Cabins, etc.	No.	1,187	1,231	1,216	1,227	1,256	1,254
Total capacity	No.	20,462	20,159	20,038	19,992	19,925	19,606
Sites occupied by long-term guests	No.	674	643	632	605	585	604
Other sites permanently reserved (a)	No.	1,343	1,330	1,359	1,437	1,467	1,505
Employment (persons)	No.	630	645	607	584	593	594
Site nights occupied (a)	No.	415,362	483,249	415,132	352,153	427,273	500,304	(a)	1,694,862
Site occupancy rate (a)	per cent	22.1	26.6	22.8	19.1	23.4	28.4	(a)	23.4
Takings from accommodation	\$'000	5,167	6,084	4,961	3,916	5,370	6,611	19,557	20,858
SOUTH AUSTRALIA — LONG-TERM CARAVAN PARKS									
Establishments	No.	38	40	41	43	44	44
Capacity									
On-site vans	No.	210	251	242	252	252	245
Other powered sites	No.	2,439	2,732	2,736	2,795	2,836	2,859
Unpowered sites	No.	835	985	1,031	1,071	1,046	1,042
Cabins, etc.	No.	361	339	387	390	389	390
Total capacity	No.	3,845	4,307	4,396	4,508	4,523	4,536
Sites occupied by long-term guests	No.	1,309	1,380	1,366	1,399	1,364	1,378
Other sites permanently reserved (a)	No.	31	33	31	30	29	37
Employment (persons)	No.	144	148	155	145	156	155
Site nights occupied (a)	No.	151,101	153,121	161,925	152,778	155,419	155,939	(a)	626,061
Site occupancy rate (a)	per cent	42.7	39.5	40.5	36.8	37.3	38.2	(a)	38.2
Takings from accommodation	\$'000	1,348	1,430	1,564	1,415	1,549	1,580	5,333	6,108
SOUTH AUSTRALIA — TOTAL CARAVAN PARKS									
Establishments	No.	211	211	211	211	211	210
Capacity									
On-site vans	No.	1,192	1,205	1,177	1,186	1,191	1,179
Other powered sites	No.	14,813	14,825	14,825	14,816	14,830	14,767
Unpowered sites	No.	6,754	6,866	6,829	6,881	6,782	6,552
Cabins, etc.	No.	1,548	1,570	1,603	1,617	1,645	1,644
Total capacity	No.	24,307	24,466	24,434	24,500	24,448	24,142
Sites occupied by long-term guests	No.	1,983	2,023	1,998	2,004	1,949	1,982
Other sites permanently reserved (a)	No.	1,374	1,363	1,390	1,467	1,496	1,542
Employment (persons)	No.	774	793	762	729	749	749
Site nights occupied (a)	No.	566,463	636,370	577,057	504,931	582,692	656,243	(a)	2,320,923
Site occupancy rate (a)	per cent	25.3	28.9	26.0	22.4	26.0	30.2	(a)	26.1
Takings from accommodation	\$'000	6,515	7,514	6,525	5,331	6,918	8,192	24,890	26,966

(a) From September quarter 1992, caravan park sites, etc. permanently reserved but only casually occupied by their tenants have been recorded continuously as site nights occupied irrespective of whether the tenants of individual sites were in residence on any particular night. See Explanatory Notes 11 and 14. Occupancy measures from September quarter 1992 are therefore not comparable with those from previous quarters.

TABLE 3 — SUMMARY OF HOLIDAY FLATS, UNITS AND HOUSES, SOUTH AUSTRALIA

Particulars	Unit	Quarter ended				Year ended			
		December 1992	March 1993	June 1993	September 1993	December 1993	March 1994	March 1993	March 1994
Letting entities	No.	84	83	86	87	87	86
Flats, units and houses									
Single bedroom	No.	357	359	370	366	360	304
Multiple bedroom	No.	966	954	968	996	1,017	1,017
Total flats, units and houses	No.	1,323	1,313	1,338	1,362	1,377	1,321
Bed spaces	No.	6,498	6,491	6,621	6,747	6,865	6,719
Employment (persons) (a)	No.	249	248	270	260	266	275
Unit nights occupied	No.	48,675	58,970	44,833	43,696	52,563	60,475	191,454	201,567
Unit occupancy rate	per cent	40.0	49.9	36.8	35.2	41.6	50.9	40.2	41.0
Unit lettings	No.	9,805	10,097	9,061	9,493	10,375	10,258	37,816	39,187
Average length of stay	days	5.0	5.8	4.9	4.6	5.1	5.9	5.1	5.1
Takings from accommodation	\$'000	2,905	3,263	2,359	2,551	3,290	3,546	10,661	11,746

(a) Employment numbers exclude real estate agents and their employees.

TABLE 4 — SUMMARY OF VISITOR HOSTELS, SOUTH AUSTRALIA

Particulars	Unit	Quarter ended				Year ended			
		December 1992	March 1993	June 1993	September 1993	December 1993	March 1994	March 1993	March 1994
Establishments	No.	40	41	40	42	42	44
Bed spaces	No.	1,992	1,970	1,955	2,029	2,037	2,098
Employment (persons)	No.	134	127	125	121	123	144
Guest nights	No.	55,064	59,084	44,937	47,999	59,296	67,089	206,111	219,321
Bed occupancy rate	per cent	30.0	33.6	25.3	25.9	31.6	35.5	31.6	29.7
Guest arrivals	No.	27,981	32,142	22,577	28,272	27,628	31,479	110,238	109,956
Average length of stay	days	2.0	1.8	2.0	1.7	2.1	2.1	1.9	2.0
Takings from accommodation	\$'000	558	598	471	432	638	673	1,965	2,215

TABLE 5 — HOTELS, MOTELS AND GUEST HOUSES WITH FACILITIES BY STAR GRADING,
SOUTH AUSTRALIA (a)

Particulars	Star grading						Total
	1	2	3	4	5	Ungraded	
ESTABLISHMENTS, CAPACITY AND EMPLOYMENT							
<i>March quarter 1993—</i>							
Establishments	17	155	137	16	3	35	363
Guest rooms	227	3,295	4,732	1,067	1,083	335	10,739
Bed spaces	456	9,291	13,975	3,336	2,164	871	30,093
Employment (persons)	290	2,169	2,576	943	1,015	601	7,594
<i>March quarter 1994—</i>							
Establishments	11	149	137	17	3	25	342
Guest rooms	142	3,318	4,669	1,119	1,081	296	10,625
Bed spaces	302	9,363	13,820	3,444	2,162	785	29,876
Employment (persons)	199	2,045	2,546	1,012	952	574	7,328
ROOM NIGHTS OCCUPIED							
<i>March quarter 1993</i>	3,261	106,312	216,491	64,822	52,392	9,903	453,181
<i>1994—</i>							
January	816	40,654	76,014	22,217	16,423	3,122	159,246
February	766	32,061	64,296	23,461	20,503	2,991	144,078
March	1,240	37,945	80,525	25,443	26,203	3,127	174,483
<i>March quarter 1994</i>	2,822	110,660	220,835	71,121	63,129	9,240	477,807
ROOM OCCUPANCY RATES (per cent)							
<i>March quarter 1993</i>	16.0	36.0	50.8	67.5	53.8	32.8	47.0
<i>1994—</i>							
January	18.5	39.5	52.5	64.0	49.0	34.0	48.3
February	19.3	34.6	49.2	74.9	67.7	36.1	48.5
March	28.2	37.0	55.6	73.3	78.2	34.1	53.0
<i>March quarter 1994</i>	22.1	37.2	52.6	70.6	64.9	34.7	50.0
GUEST NIGHTS							
<i>March quarter 1993</i>	4,790	194,368	381,981	109,875	72,123	15,427	778,564
<i>1994—</i>							
January	1,187	81,647	154,182	43,404	24,767	4,570	309,757
February	1,021	53,874	103,261	35,687	28,545	4,012	226,400
March	1,735	63,731	131,651	39,361	36,302	4,209	276,989
<i>March quarter 1994</i>	3,943	199,252	389,094	118,452	89,614	12,791	813,146
BED OCCUPANCY RATES (per cent)							
<i>March quarter 1993</i>	11.7	23.4	30.4	36.6	37.0	19.7	28.8
<i>1994—</i>							
January	12.7	28.1	36.0	40.7	37.0	18.8	33.4
February	12.1	20.6	26.7	37.0	47.2	18.3	27.1
March	18.5	22.0	30.7	36.9	54.2	17.3	29.9
<i>March quarter 1994</i>	14.5	23.7	31.3	38.2	46.1	18.1	30.3
GUEST ARRIVALS							
<i>March quarter 1993</i>	2,728	108,446	203,033	41,233	36,143	7,457	399,040
<i>1994—</i>							
January	693	47,427	79,766	21,979	11,536	1,992	163,393
February	645	31,809	56,877	19,468	14,161	1,750	124,710
March	966	38,278	72,025	20,952	15,211	1,913	149,345
<i>March quarter 1994</i>	2,304	117,514	208,668	62,399	40,908	5,655	437,448
AVERAGE LENGTH OF STAY (days)							
<i>March quarter 1993</i>	1.8	1.8	1.9	2.7	2.0	2.1	2.0
<i>March quarter 1994</i>	1.7	1.7	1.9	1.9	2.2	2.3	1.9
TAKINGS FROM ACCOMMODATION (\$'000)							
<i>March quarter 1993</i>	93	4,759	14,292	6,381	6,198	487	32,210
<i>1994—</i>							
January	25	1,886	5,055	2,198	1,830	147	11,141
February	24	1,400	4,259	2,423	2,501	139	10,747
March	36	1,707	5,375	2,537	3,322	141	13,119
<i>March quarter 1994</i>	85	4,993	14,689	7,158	7,654	427	35,007

(a) From December quarter 1993, establishments with fewer than 5 rooms have been formally excluded from the scope of this collection. See Explanatory Note 2 (page 21).

TABLE 6 — HOTELS, MOTELS AND GUEST HOUSES WITH FACILITIES BY STATISTICAL DIVISION,
SOUTH AUSTRALIA (a)

Particulars	Adelaide (SD)			Outer Adelaide (SD)			Yorke and Lower North (SD)			Murray Lands (SD)		
	Licensed hotels	Motels, etc.	Total	Licensed hotels	Motels, etc.	Total	Licensed hotels	Motels, etc.	Total	Licensed hotels	Motels, etc.	Total
ESTABLISHMENTS, CAPACITY AND EMPLOYMENT												
<i>March quarter 1993—</i>												
Establishments	57	65	122	7	46	53	8	18	26	11	23	34
Guest rooms	2,763	2,648	5,411	239	790	1,029	113	267	380	440	411	851
Bed spaces	6,325	8,135	14,460	767	2,491	3,258	314	811	1,125	1,068	1,296	2,364
Employment (persons)	3,617	1,008	4,625	299	378	677	60	121	181	339	136	475
<i>March quarter 1994—</i>												
Establishments	51	63	114	8	36	44	8	17	25	10	23	33
Guest rooms	2,750	2,632	5,382	245	736	981	116	268	384	408	408	816
Bed spaces	6,299	7,985	14,284	767	2,338	3,105	327	851	1,178	1,032	1,297	2,329
Employment (persons)	3,374	1,009	4,383	303	333	636	79	115	194	405	131	536
ROOM NIGHTS OCCUPIED												
<i>March quarter 1993</i>	131,099	131,311	262,410	10,967	33,448	44,415	2,766	11,255	14,021	11,459	13,375	24,834
<i>1994—</i>												
January	42,664	48,693	91,357	4,837	13,054	17,891	919	4,125	5,044	3,456	4,784	8,240
February	48,957	40,983	89,940	3,284	8,572	11,856	673	2,900	3,573	3,470	4,037	7,507
March	57,293	50,131	107,424	3,643	10,401	14,044	927	3,785	4,712	4,633	5,427	10,060
<i>March quarter 1994</i>	148,914	139,807	288,721	11,764	32,027	43,791	2,519	10,810	13,329	11,559	14,248	25,807
ROOM OCCUPANCY RATES (per cent)												
<i>March quarter 1993</i>	52.7	55.1	53.9	51.0	47.0	48.0	27.2	46.8	41.0	28.9	36.2	32.4
<i>1994—</i>												
January	50.0	59.7	54.8	63.7	57.2	58.8	25.6	49.7	42.4	27.3	37.8	32.6
February	63.9	55.6	59.8	47.9	41.6	43.2	20.7	38.6	33.2	30.4	35.3	32.9
March	67.5	61.4	64.5	48.0	45.6	46.2	25.8	45.6	39.6	36.6	42.9	39.8
<i>March quarter 1994</i>	60.4	59.0	59.7	53.4	48.3	49.6	24.1	44.8	38.6	31.5	38.8	35.1
GUEST NIGHTS												
<i>March quarter 1993</i>	197,752	237,323	435,075	22,870	72,850	95,720	4,226	21,435	25,661	17,765	25,979	43,744
<i>1994—</i>												
January	70,546	99,540	170,086	12,172	30,342	42,514	1,497	9,525	11,022	5,774	10,455	16,229
February	69,892	68,243	138,135	5,805	17,316	23,121	992	4,981	5,973	5,784	6,816	12,600
March	81,948	84,767	166,715	6,705	20,255	26,960	1,365	6,612	7,977	6,773	9,520	16,293
<i>March quarter 1994</i>	222,386	252,550	474,936	24,682	67,913	92,595	3,854	21,118	24,972	18,331	26,791	45,122
BED OCCUPANCY RATES (per cent)												
<i>March quarter 1993</i>	34.7	32.4	33.4	33.1	32.5	32.6	15.0	29.4	25.3	18.5	22.3	20.6
<i>1994—</i>												
January	36.1	40.2	38.4	51.2	41.9	44.2	14.8	36.1	30.2	18.0	26.0	22.5
February	39.8	30.5	34.6	27.0	26.5	26.6	10.8	20.9	18.1	20.0	18.8	19.3
March	42.2	34.2	37.7	28.2	27.9	28.0	13.5	25.1	21.8	21.2	23.7	22.6
<i>March quarter 1994</i>	39.4	35.1	37.0	35.8	32.3	33.1	13.1	27.6	23.6	19.7	23.0	21.5
GUEST ARRIVALS												
<i>March quarter 1993</i>	84,923	105,723	190,646	12,523	36,055	48,578	2,755	13,449	16,204	11,391	18,170	29,561
<i>1994—</i>												
January	33,604	45,325	78,929	6,200	14,315	20,515	1,031	5,469	6,500	3,814	6,866	10,680
February	34,328	34,070	68,398	3,520	9,411	12,931	695	3,528	4,223	3,340	4,971	8,311
March	37,297	40,758	78,055	4,356	11,200	15,556	843	4,534	5,377	4,436	6,699	11,135
<i>March quarter 1994</i>	105,229	120,153	225,382	14,076	34,926	49,002	2,569	13,531	16,100	11,590	18,536	30,126
AVERAGE LENGTH OF STAY (days)												
<i>March quarter 1993</i>	2.3	2.2	2.3	1.8	2.0	2.0	1.5	1.6	1.6	1.6	1.4	1.5
<i>March quarter 1994</i>	2.1	2.1	2.1	1.8	1.9	1.9	1.5	1.6	1.6	1.6	1.4	1.5
TAKINGS FROM ACCOMMODATION (\$'000)												
<i>March quarter 1993</i>	12,557	8,977	21,534	794	2,287	3,081	95	617	712	509	727	1,237
<i>1994—</i>												
January	3,912	3,289	7,200	321	912	1,233	37	231	268	158	270	428
February	4,919	2,797	7,716	207	580	787	23	159	182	153	215	368
March	5,867	3,509	9,375	240	700	940	36	206	242	200	284	484
<i>March quarter 1994</i>	14,697	9,595	24,291	769	2,192	2,961	96	595	692	511	769	1,280

TABLE 6 — HOTELS, MOTELS AND GUEST HOUSES WITH FACILITIES BY STATISTICAL DIVISION,
SOUTH AUSTRALIA (a)—continued

Particulars	South East (SD)			Eyre (SD)			Northern (SD)			South Australia		
	Licensed hotels	Motels, etc.	Total	Licensed hotels	Motels, etc.	Total	Licensed hotels	Motels, etc.	Total	Licensed hotels	Motels, etc.	Total
ESTABLISHMENTS, CAPACITY AND EMPLOYMENT												
<i>March quarter 1993—</i>												
Establishments	9	44	53	12	18	30	17	28	45	121	242	363
Guest rooms	166	987	1,153	266	366	632	551	732	1,283	4,538	6,201	10,739
Bed spaces	408	3,064	3,472	679	1,062	1,741	1,477	2,196	3,673	11,038	19,055	30,093
Employment (persons)	207	357	564	239	138	377	414	281	695	5,175	2,419	7,594
<i>March quarter 1994—</i>												
Establishments	9	43	52	12	18	30	15	29	44	113	229	342
Guest rooms	165	1,006	1,171	255	366	621	514	756	1,270	4,453	6,172	10,625
Bed spaces	406	3,116	3,522	662	1,078	1,740	1,420	2,298	3,718	10,913	18,963	29,876
Employment (persons)	189	362	551	228	126	354	350	324	674	4,928	2,400	7,328
ROOM NIGHTS OCCUPIED												
<i>March quarter 1993</i>	6,214	42,257	48,471	7,811	12,175	19,986	13,903	25,141	39,044	184,219	268,962	453,181
<i>1994—</i>												
January	1,834	15,268	17,102	2,519	4,559	7,078	3,879	8,655	12,534	60,108	99,138	159,246
February	1,661	11,226	12,887	2,236	3,255	5,491	4,439	8,385	12,824	64,720	79,358	144,078
March	2,102	14,424	16,526	2,499	4,094	6,593	5,146	9,978	15,124	76,243	98,240	174,483
<i>March quarter 1994</i>	5,597	40,918	46,515	7,254	11,908	19,162	13,464	27,018	40,482	201,071	276,736	477,807
ROOM OCCUPANCY RATES (per cent)												
<i>March quarter 1993</i>	41.6	48.3	47.4	32.6	37.0	35.1	28.0	38.2	33.8	45.1	48.3	47.0
<i>1994—</i>												
January	35.9	49.0	47.1	31.9	40.2	36.8	24.3	36.9	31.8	43.5	51.8	48.3
February	36.0	39.9	39.3	31.3	31.8	31.6	30.8	39.6	36.1	52.1	45.9	48.5
March	41.1	46.3	45.5	31.6	36.1	34.2	32.3	42.6	38.4	55.4	51.3	53.0
<i>March quarter 1994</i>	37.7	45.2	44.1	31.6	36.2	34.3	29.1	39.7	35.4	50.3	49.8	50.0
GUEST NIGHTS												
<i>March quarter 1993</i>	9,049	73,360	82,409	12,580	21,586	34,166	22,666	39,123	61,789	286,908	491,656	778,564
<i>1994—</i>												
January	2,774	30,322	33,096	4,650	10,143	14,793	7,153	14,864	22,017	104,566	205,191	309,757
February	2,262	17,641	19,903	2,992	4,822	7,814	6,505	12,349	18,854	94,232	132,168	226,400
March	2,949	23,676	26,625	3,309	6,310	9,619	7,769	15,031	22,800	110,818	166,171	276,989
<i>March quarter 1994</i>	7,985	71,639	79,624	10,951	21,275	32,226	21,427	42,244	63,671	309,616	503,530	813,146
BED OCCUPANCY RATES (per cent)												
<i>March quarter 1993</i>	24.6	27.1	26.8	20.6	22.6	21.8	17.1	19.8	18.7	28.9	28.7	28.8
<i>1994—</i>												
January	22.0	31.4	30.3	22.7	30.4	27.4	16.2	20.9	19.1	30.9	34.9	33.4
February	19.9	20.2	20.2	16.1	16.0	16.0	16.4	19.2	18.1	30.9	24.9	27.1
March	23.4	24.5	24.4	16.1	18.9	17.8	17.6	21.1	19.8	32.9	28.3	29.9
<i>March quarter 1994</i>	21.9	25.5	25.1	18.4	21.9	20.6	16.8	20.4	19.0	31.6	29.5	30.3
GUEST ARRIVALS												
<i>March quarter 1993</i>	4,315	46,919	51,234	8,335	14,311	22,646	15,079	25,092	40,171	139,321	259,719	399,040
<i>1994—</i>												
January	1,704	19,932	21,636	3,303	6,727	10,030	5,258	9,845	15,103	54,914	108,479	163,393
February	1,402	11,881	13,283	2,021	3,435	5,456	3,911	8,197	12,108	49,217	75,493	124,710
March	1,821	15,582	17,403	2,493	4,291	6,784	4,956	10,079	15,035	56,202	93,143	149,345
<i>March quarter 1994</i>	4,927	47,395	52,322	7,817	14,453	22,270	14,125	28,121	42,246	160,333	277,115	437,448
AVERAGE LENGTH OF STAY (days)												
<i>March quarter 1993</i>	2.1	1.6	1.6	1.5	1.5	1.5	1.5	1.6	1.5	2.1	1.9	2.0
<i>March quarter 1994</i>	1.6	1.5	1.5	1.4	1.5	1.4	1.5	1.5	1.5	1.9	1.8	1.9
TAKINGS FROM ACCOMMODATION (\$'000)												
<i>March quarter 1993</i>	231	2,247	2,478	341	643	984	709	1,475	2,184	15,237	16,973	32,210
<i>1994—</i>												
January	67	877	944	120	245	366	211	491	702	4,826	6,315	11,141
February	66	624	689	97	176	273	225	506	731	5,690	5,057	10,747
March	84	802	886	112	216	328	273	590	863	6,812	6,307	13,119
<i>March quarter 1994</i>	217	2,303	2,520	329	637	966	709	1,588	2,297	17,328	17,679	35,007

(a) From December quarter 1993, establishments with fewer than 5 rooms have been formally excluded from the scope of this collection. See Explanatory Note 2 (page 21).

TABLE 7A — LICENSED HOTELS AND MOTELS AND GUEST HOUSES WITH FACILITIES: STATISTICAL

Statistical Subdivisions and selected Statistical Local Areas	Establish- ments	Guest rooms	Bed spaces	Employ- ment (persons)	Room nights occupied				Room occupancy rates (per cent)			
					Jan.	Feb.	Mar.	Mar. qtr	Jan.	Feb.	Mar.	Mar. qtr
LICENSED HOTELS WITH FACILITIES												
Northern and Southern (SSDs)	22	478	1,358	1,277	7,787	7,703	8,382	23,872	52.6	57.6	56.6	55.5
Western (SSD)	11	191	409	320	2,453	2,715	2,867	8,035	41.4	54.5	52.0	48.9
Adelaide (C)	12	1,987	4,276	1,488	31,454	37,627	44,807	113,888	51.1	67.6	72.7	63.7
Eastern (SSD) — Balance	6	94	256	289	970	912	1,237	3,119	33.3	34.7	42.5	36.9
Eastern (SSD)	18	2,081	4,532	1,777	32,424	38,539	46,044	117,007	50.3	66.1	71.4	62.5
Barossa, Kangaroo Island, Onkaparinga, Fleurieu and Lower North (SSDs)	10	271	837	323	5,110	3,468	4,046	12,624	60.8	45.7	48.2	51.8
Yorke (SSD)	6	90	257	59	646	489	524	1,659	23.2	19.4	18.8	20.5
Riverland (SSD)	6	358	930	352	3,246	3,205	4,143	10,594	29.2	32.0	37.3	32.9
Murray Mallee (SSD)	4	50	102	53	210	265	490	965	13.5	18.9	31.6	21.4
Upper South East (SSD)	4	81	203	86	574	617	911	2,102	22.9	27.2	36.3	28.8
Lower South East (SSD)	5	84	203	103	1,260	1,044	1,191	3,495	48.4	44.4	45.7	46.2
Lincoln (SSD)	8	121	277	134	1,121	1,188	1,193	3,502	29.9	35.1	31.8	32.2
West Coast (SSD)	4	134	385	94	1,398	1,048	1,306	3,752	33.7	27.9	31.4	31.1
Whyalla (SSD)	6	142	379	175	1,385	2,023	1,848	5,256	31.5	50.9	42.0	41.1
Flinders Ranges (SSD)	4	92	252	44	539	447	800	1,786	18.9	17.4	28.1	21.6
Pirie and Far North (SSDs)	5	280	789	131	1,955	1,969	2,498	6,422	22.5	25.1	28.8	25.5
<i>Total South Australia</i>	<i>113</i>	<i>4,453</i>	<i>10,913</i>	<i>4,928</i>	<i>60,108</i>	<i>64,720</i>	<i>76,243</i>	<i>201,071</i>	<i>43.5</i>	<i>52.1</i>	<i>55.4</i>	<i>50.3</i>
MOTELS AND GUEST HOUSES WITH FACILITIES												
Northern and Southern (SSDs)	23	832	2,576	333	13,864	10,936	13,130	37,930	53.8	46.9	50.9	50.7
Western (SSD)	4	114	326	41	2,014	1,706	1,794	5,514	57.0	53.4	50.8	53.7
Adelaide (C)	16	936	2,728	403	19,034	17,520	21,986	58,540	65.6	66.8	75.8	69.5
Eastern (SSD) — Balance	20	750	2,355	232	13,781	10,821	13,221	37,823	59.3	51.5	56.9	56.0
Eastern (SSD)	36	1,686	5,083	635	32,815	28,341	35,207	96,363	62.8	60.0	67.4	63.5
Barossa, Kangaroo Island, Onkaparinga, Fleurieu and Lower North (SSDs)	43	851	2,686	394	14,429	9,739	12,233	36,401	54.7	40.9	46.4	47.5
Yorke (SSD)	10	153	503	54	2,750	1,733	1,953	6,436	58.0	40.5	41.2	46.7
Riverland (SSD)	13	245	802	83	2,761	2,107	2,882	7,750	36.4	30.7	37.9	35.1
Murray Mallee (SSD)	10	163	495	48	2,023	1,930	2,545	6,498	40.0	42.3	50.4	44.3
Robe (DC)	6	96	324	36	1,851	883	1,189	3,923	62.2	32.8	40.0	45.4
Lacepede (DC)	3	51	163	17	914	667	713	2,294	57.8	46.7	45.1	50.0
Upper South East (SSD) — Balance	8	166	480	55	2,176	1,922	2,774	6,872	42.3	41.4	53.9	46.0
Upper South East (SSD)	17	313	967	108	4,941	3,472	4,676	13,089	50.9	39.6	48.2	46.5
Lower South East (SSD)	26	693	2,149	254	10,327	7,754	9,748	27,829	48.1	40.0	45.4	44.6
Lincoln (SSD)	13	222	642	70	2,774	2,195	2,722	7,691	40.3	35.3	39.6	38.5
West Coast (SSD)	5	144	436	56	1,785	1,060	1,372	4,217	40.0	26.3	30.7	32.5
Whyalla (SSD)	5	117	340	59	1,402	2,002	2,054	5,458	38.7	61.1	56.6	51.8
Flinders Ranges (SSD)	12	379	1,229	146	4,736	3,594	4,771	13,101	40.3	33.9	40.6	38.4
Pirie and Far North (SSDs)	12	260	729	119	2,517	2,789	3,153	8,459	31.2	38.3	39.1	36.1
<i>Total South Australia</i>	<i>229</i>	<i>6,172</i>	<i>18,963</i>	<i>2,400</i>	<i>99,138</i>	<i>79,358</i>	<i>98,240</i>	<i>276,736</i>	<i>51.8</i>	<i>45.9</i>	<i>51.3</i>	<i>49.8</i>

SUBDIVISIONS AND SELECTED STATISTICAL LOCAL AREAS, SOUTH AUSTRALIA, MARCH QUARTER 1994

<i>Guest nights</i>				<i>Guest arrivals</i>				<i>Takings from accommodation (\$'000)</i>			
<i>Jan.</i>	<i>Feb.</i>	<i>Mar.</i>	<i>Mar. qtr</i>	<i>Jan.</i>	<i>Feb.</i>	<i>Mar.</i>	<i>Mar. qtr</i>	<i>Jan.</i>	<i>Feb.</i>	<i>Mar.</i>	<i>Mar. qtr</i>
LICENSED HOTELS WITH FACILITIES											
13,315	10,963	12,397	36,675	3,699	3,691	4,061	11,451	674	752	763	2,188
3,278	3,264	3,681	10,223	1,227	1,312	1,544	4,083	113	116	131	361
52,405	54,437	64,145	170,987	27,830	28,541	30,710	87,081	3,046	3,978	4,888	11,913
1,548	1,228	1,725	4,501	848	784	982	2,614	79	73	84	235
53,953	55,665	65,870	175,488	28,678	29,325	31,692	89,695	3,125	4,051	4,972	12,148
12,547	6,068	7,199	25,814	6,431	3,748	4,642	14,821	333	215	256	803
1,122	729	871	2,722	800	467	557	1,824	25	15	21	62
5,521	5,444	6,125	17,090	3,632	3,135	4,144	10,911	150	144	183	477
253	340	648	1,241	182	205	292	679	8	9	17	34
1,042	853	1,341	3,236	815	653	917	2,385	26	25	38	89
1,732	1,409	1,608	4,749	889	749	904	2,542	41	41	46	128
1,696	1,499	1,519	4,714	810	730	951	2,491	44	46	47	138
2,954	1,493	1,790	6,237	2,493	1,291	1,542	5,326	76	51	65	192
2,045	2,556	2,505	7,106	921	873	1,143	2,937	51	85	75	211
797	670	1,066	2,533	558	535	763	1,856	23	17	33	72
4,311	3,279	4,198	11,788	3,779	2,503	3,050	9,332	138	123	165	426
104,566	94,232	110,818	309,616	54,914	49,217	56,202	160,333	4,826	5,690	6,812	17,328
MOTELS AND GUEST HOUSES WITH FACILITIES											
30,491	18,398	22,790	71,679	13,349	9,379	10,665	33,393	988	749	899	2,635
3,610	2,414	2,606	8,630	1,742	1,352	1,557	4,651	133	115	119	367
34,779	26,794	33,616	95,189	14,997	12,884	15,480	43,361	1,401	1,323	1,707	4,431
30,660	20,637	25,755	77,052	15,237	10,455	13,056	38,748	766	611	784	2,161
65,439	47,431	59,371	172,241	30,234	23,339	28,536	82,109	2,168	1,933	2,491	6,592
33,002	19,295	23,498	75,795	16,460	11,028	13,584	41,072	1,000	654	815	2,469
6,865	3,002	3,369	13,236	3,324	1,911	2,150	7,385	143	85	91	318
6,249	3,597	4,928	14,774	3,441	2,427	3,429	9,297	164	122	160	446
4,206	3,219	4,592	12,017	3,425	2,544	3,270	9,239	106	93	124	323
4,690	1,819	2,337	8,846	2,869	1,299	1,645	5,813	105	45	59	209
1,815	925	1,216	3,956	1,720	853	1,132	3,705	47	32	30	108
4,010	2,827	4,311	11,148	3,316	2,301	3,346	8,963	108	91	133	331
10,515	5,571	7,864	23,950	7,905	4,453	6,123	18,481	259	168	221	648
19,807	12,070	15,812	47,689	12,027	7,428	9,459	28,914	618	456	581	1,655
5,991	3,195	4,110	13,296	3,345	2,143	2,620	8,108	150	122	146	418
4,152	1,627	2,200	7,979	3,382	1,292	1,671	6,345	96	54	69	219
1,892	2,544	2,608	7,044	1,176	1,533	1,811	4,520	90	132	138	360
9,123	6,086	8,017	23,226	5,885	4,144	5,075	15,104	263	215	273	751
3,849	3,719	4,406	11,974	2,784	2,520	3,193	8,497	138	159	179	476
205,191	132,168	166,171	503,530	108,479	75,493	93,143	277,115	6,315	5,057	6,307	17,679

TABLE 7B — HOTELS, MOTELS AND GUEST HOUSES WITH FACILITIES: STATISTICAL DIVISIONS AND SELECTED

Statistical Divisions and selected Subdivisions and Statistical Local Areas	Establish- ments	Guest rooms	Bed spaces	Employ- ment (persons)	Room nights occupied				Room occupancy rates (per cent)			
					Jan.	Feb.	Mar.	Mar. qtr	Jan.	Feb.	Mar.	Mar. qtr
					Salisbury (C)	6	90	261	165	1,151	1,044	1,300
Tea Tree Gully (C)	3	21	60	79	178	165	184	527	27.3	28.1	28.3	27.9
Northern (SSD) — Balance	9	283	762	199	3,104	2,672	3,472	9,248	35.4	33.7	39.6	36.3
Woodville (C)	6	125	283	173	1,564	1,877	1,977	5,418	40.4	53.6	51.0	48.2
Western (SSD) — Balance	9	180	452	188	2,903	2,544	2,684	8,131	52.0	54.4	51.8	52.7
Adelaide (C)	28	2,923	7,004	1,891	50,488	55,147	66,793	172,428	55.7	67.4	73.7	65.5
Burnside (C)	9	311	948	120	5,871	4,503	5,349	15,723	60.9	51.7	55.5	56.2
Kensington and Norwood (C)	3	161	486	57	2,670	1,871	2,689	7,230	53.5	41.5	53.9	49.9
Unley (C)	7	214	706	158	3,956	3,158	4,059	11,173	59.6	52.7	61.2	58.0
Eastern (SSD) — Balance	7	158	471	186	2,254	2,201	2,361	6,816	46.0	49.8	48.2	47.9
Glenelg (C)	13	656	2,040	750	13,341	11,475	13,048	37,864	65.6	62.5	64.2	64.1
Marion (C)	5	76	229	199	972	769	770	2,511	41.3	36.1	32.7	36.7
Southern (SSD) — Balance	9	184	582	218	2,905	2,514	2,738	8,157	50.9	48.8	48.0	49.3
Adelaide (SD)	114	5,382	14,284	4,383	91,357	89,940	107,424	288,721	54.8	59.8	64.5	59.7
Tanunda (DC)	5	135	403	88	2,155	1,735	1,935	5,825	51.5	45.9	46.2	47.9
Barossa (SSD) — Balance	8	133	365	100	1,812	1,453	1,711	4,976	43.9	39.0	41.5	41.6
Dudley (DC)	4	91	270	38	2,003	980	1,277	4,260	71.0	38.5	45.3	52.0
Kingscote (DC)	5	108	297	83	2,211	1,713	1,957	5,881	66.0	56.6	58.5	60.5
Port Elliot and Goolwa (DC)	4	75	252	25	1,054	528	615	2,197	45.3	25.1	26.5	32.5
Victor Harbor (DC)	10	205	657	118	4,624	2,638	3,374	10,636	72.8	46.0	53.1	57.6
Outer Adelaide (SD) — Balance	8	234	861	184	4,032	2,809	3,175	10,016	55.6	42.9	43.8	47.6
Outer Adelaide (SD)	44	981	3,105	636	17,891	11,856	14,044	43,791	58.8	43.2	46.2	49.6
Northern Yorke Peninsula (DC)	3	50	178	20	783	632	675	2,090	50.5	45.1	43.5	46.4
Walleroo (M)	3	64	200	17	935	506	538	1,979	47.1	28.2	27.1	34.4
Yorke town (DC)	5	59	183	23	1,182	660	800	2,642	64.6	40.0	43.7	49.8
Yorke (SSD) — Balance	5	70	199	53	496	424	464	1,384	22.9	21.6	21.4	22.0
Clare (DC)	6	107	312	68	1,244	1,109	1,697	4,050	37.5	37.0	51.2	42.1
Lower North (SSD) — Balance	3	34	106	13	404	242	538	1,184	38.3	25.4	51.0	38.7
Yorke and Lower North (SD)	25	384	1,178	194	5,044	3,573	4,712	13,329	42.4	33.2	39.6	38.6
Barnera (DC)	3	115	328	50	1,167	930	1,183	3,280	32.7	28.9	33.2	31.7
Renmark (M)	5	209	567	106	1,840	1,627	2,127	5,594	28.4	27.8	32.8	29.7
Riverland (SSD) — Balance	11	279	837	279	3,000	2,755	3,715	9,470	34.7	35.3	43.0	37.7
Meningie (DC)	4	45	110	17	529	469	740	1,738	37.9	37.2	53.0	42.9
Murray Bridge (RC)	5	90	268	41	1,082	1,046	1,187	3,315	38.8	41.5	42.5	40.9
Murray Mallee (SSD) — Balance	5	78	219	43	622	680	1,108	2,410	25.7	31.1	45.8	34.3
Murray Lands (SD)	33	816	2,329	536	8,240	7,507	10,060	25,807	32.6	32.9	39.8	35.1
Lacepede (DC)	3	51	163	17	914	667	713	2,294	57.8	46.7	45.1	50.0
Naracoorte (M)	6	112	297	69	1,142	1,015	1,564	3,721	32.9	32.4	45.0	36.9
Robe (DC)	6	96	324	36	1,851	883	1,189	3,923	62.2	32.8	40.0	45.4
Tatiara (DC)	6	135	386	72	1,608	1,524	2,121	5,253	38.4	40.3	50.7	43.2
Millicent (DC)	3	76	218	36	638	552	627	1,817	27.1	25.9	26.6	26.6
Mount Gambier (C)	21	615	1,857	264	9,137	7,032	8,833	25,002	47.9	40.8	46.3	45.2
Lower South East (SSD) — Balance	7	86	277	57	1,812	1,214	1,479	4,505	68.0	50.4	55.5	58.2
South East (SD)	52	1,171	3,522	551	17,102	12,887	16,526	46,515	47.1	39.3	45.5	44.1
Port Lincoln (C)	9	169	484	105	2,685	2,128	2,528	7,341	51.3	45.0	48.3	48.3
Lincoln (SSD) — Balance	12	174	435	99	1,210	1,255	1,387	3,852	22.4	25.8	25.7	24.6
Murat Bay (DC) and Streaky Bay (DC)	6	204	556	115	2,383	1,760	2,125	6,268	37.7	30.8	33.6	34.1
Unincorporated West Coast	3	74	265	35	800	348	553	1,701	34.9	16.8	24.1	25.5
Eyre (SD)	30	621	1,740	354	7,078	5,491	6,593	19,162	36.8	31.6	34.2	34.3
Whyalla (SSD)	11	259	719	234	2,787	4,025	3,902	10,714	34.7	55.5	48.6	46.0
Pirie (SSD)	8	163	460	74	1,831	2,025	2,231	6,087	36.2	44.4	44.2	41.5
Port Augusta (C)	9	299	898	109	4,486	3,420	4,376	12,282	48.4	40.9	47.2	45.6
Flinders Ranges (SSD) — Balance	7	172	583	81	789	621	1,195	2,605	14.8	12.9	22.4	16.8
Far North (SSD)	9	377	1,058	176	2,641	2,733	3,420	8,794	22.6	25.9	29.3	25.9
Northern (SD)	44	1,270	3,718	674	12,534	12,824	15,124	40,482	31.8	36.1	38.4	35.4
South Australia	342	10,625	29,876	7,328	159,246	144,078	174,483	477,807	48.3	48.5	53.0	50.0

SUBDIVISIONS AND STATISTICAL LOCAL AREAS, SOUTH AUSTRALIA, MARCH QUARTER 1994

<i>Guest nights</i>				<i>Guest arrivals</i>				<i>Takings from accommodation (\$'000)</i>			
<i>Jan.</i>	<i>Feb.</i>	<i>Mar.</i>	<i>Mar. qtr</i>	<i>Jan.</i>	<i>Feb.</i>	<i>Mar.</i>	<i>Mar. qtr</i>	<i>Jan.</i>	<i>Feb.</i>	<i>Mar.</i>	<i>Mar. qtr</i>
1,992	1,646	2,322	5,960	1,073	863	974	2,910	49	44	68	161
308	276	318	902	170	143	174	487	7	6	9	22
6,517	4,233	5,473	16,223	3,066	2,266	2,566	7,898	206	174	225	605
2,150	2,233	2,554	6,937	1,027	1,042	1,312	3,381	93	92	102	288
4,738	3,445	3,733	11,916	1,942	1,622	1,789	5,353	153	139	149	440
87,184	81,231	97,761	266,176	42,827	41,425	46,190	130,442	4,447	5,301	6,595	16,344
13,736	8,728	11,256	33,720	7,888	4,816	6,530	19,234	297	208	278	783
4,546	2,970	4,283	11,799	1,681	1,468	1,723	4,872	132	130	186	448
9,738	6,819	8,281	24,838	4,076	3,070	3,533	10,679	240	181	239	660
4,188	3,348	3,660	11,196	2,440	1,885	2,252	6,577	177	164	164	505
27,449	18,100	21,300	66,849	9,367	7,205	8,242	24,814	1,206	1,105	1,187	3,498
2,264	1,311	1,504	5,079	1,041	672	767	2,480	52	38	40	130
5,276	3,795	4,270	13,341	2,331	1,921	2,003	6,255	141	133	134	407
170,086	138,135	166,715	474,936	78,929	68,398	78,055	225,382	7,200	7,716	9,375	24,291
4,731	3,085	3,445	11,261	2,861	1,988	2,324	7,173	132	100	120	352
3,473	2,484	3,043	9,000	2,068	1,597	2,108	5,773	110	83	102	295
4,353	2,058	2,840	9,251	1,806	1,024	1,510	4,340	107	53	70	230
4,966	3,128	3,660	11,754	2,173	1,498	1,940	5,611	141	109	116	365
2,580	1,087	1,307	4,974	1,435	749	782	2,966	73	32	36	141
12,181	6,319	7,311	25,811	5,865	3,745	3,868	13,478	338	186	227	750
10,230	4,960	5,354	20,544	4,307	2,330	3,024	9,661	333	225	269	827
42,514	23,121	26,960	92,595	20,515	12,931	15,556	49,002	1,233	787	940	2,961
1,781	999	1,122	3,902	1,134	754	866	2,754	49	37	39	125
2,091	913	929	3,933	1,159	633	610	2,402	38	19	20	77
3,263	1,210	1,428	5,901	1,191	594	739	2,524	63	31	34	128
852	609	761	2,222	640	397	492	1,529	19	13	18	51
2,475	1,903	2,850	7,228	1,960	1,586	2,043	5,589	83	70	105	257
560	339	887	1,786	416	259	627	1,302	17	12	26	55
11,022	5,973	7,977	24,972	6,500	4,223	5,377	16,100	268	182	242	692
2,676	1,486	1,879	6,041	1,117	835	1,134	3,086	66	43	52	160
3,812	2,800	3,479	10,091	2,441	1,842	2,322	6,605	95	82	99	277
5,282	4,755	5,695	15,732	3,515	2,885	4,117	10,517	153	142	191	486
913	741	1,208	2,862	727	626	878	2,231	25	19	32	76
2,272	1,683	2,265	6,220	1,873	1,324	1,556	4,753	57	49	57	164
1,274	1,135	1,767	4,176	1,007	799	1,128	2,934	32	33	52	117
16,229	12,600	16,293	45,122	10,680	8,311	11,135	30,126	428	368	484	1,280
1,815	925	1,216	3,956	1,720	853	1,132	3,705	47	32	30	108
2,038	1,494	2,356	5,888	1,608	1,201	1,689	4,498	57	51	73	182
4,690	1,819	2,337	8,846	2,869	1,299	1,645	5,813	105	45	59	209
3,014	2,186	3,296	8,496	2,523	1,753	2,574	6,850	76	64	98	238
831	661	862	2,354	557	401	513	1,471	27	22	29	77
16,919	10,518	13,995	41,432	9,840	6,204	8,084	24,128	519	397	495	1,410
3,789	2,300	2,563	8,652	2,519	1,572	1,766	5,857	114	79	103	296
33,096	19,903	26,625	79,624	21,636	13,283	17,403	52,322	944	689	886	2,520
5,461	2,945	3,674	12,080	2,658	1,850	2,138	6,646	138	117	130	385
2,226	1,749	1,955	5,930	1,497	1,023	1,433	3,953	56	52	64	171
5,080	2,467	2,937	10,484	3,914	1,938	2,194	8,046	122	85	104	311
2,026	653	1,053	3,732	1,961	645	1,019	3,625	50	20	30	99
14,793	7,814	9,619	32,226	10,030	5,456	6,784	22,270	366	273	328	966
3,937	5,100	5,113	14,150	2,097	2,406	2,954	7,457	141	217	213	572
2,649	2,668	3,072	8,389	1,963	1,836	2,272	6,071	87	100	110	297
8,486	5,627	7,103	21,216	5,650	3,982	4,632	14,264	242	197	235	674
1,434	1,129	1,980	4,543	793	697	1,206	2,696	44	35	71	150
5,511	4,330	5,532	15,373	4,600	3,187	3,971	11,758	188	183	234	605
22,017	18,854	22,800	63,671	15,103	12,108	15,035	42,246	702	731	863	2,297
309,757	226,400	276,989	813,146	163,393	124,710	149,345	437,448	11,141	10,747	13,119	35,007

TABLE 8 — HOLIDAY FLATS, UNITS AND HOUSES: STATISTICAL DIVISIONS AND SELECTED SUBDIVISIONS, SOUTH AUSTRALIA

Particulars	Adelaide (SD)				Outer Adelaide (SD)		
	Western (SSD)	Eastern (SSD)	Southern (SSD)	Total	Kangaroo Island (SSD)	Barossa and Fleurieu (SSDs)	Total
LETTING ENTITIES, CAPACITY AND EMPLOYMENT							
<i>March quarter 1993—</i>							
Letting entities	11	12	12	35	7	9	16
Flats, units and houses							
Single bedroom	31	140	60	231	n.p.	n.p.	27
Multiple bedroom	89	101	147	337	n.p.	n.p.	348
<i>Total flats, units and houses</i>	<i>120</i>	<i>241</i>	<i>207</i>	<i>568</i>	<i>n.p.</i>	<i>n.p.</i>	<i>375</i>
Bed spaces	508	871	912	2,291	n.p.	n.p.	2,206
Employment (persons) (a)	28	70	52	150	n.p.	n.p.	26
<i>March quarter 1994—</i>							
Letting entities	11	12	13	36	9	9	18
Flats, units and houses							
Single bedroom	31	88	53	172	19	15	34
Multiple bedroom	89	116	170	375	42	323	365
<i>Total flats, units and houses</i>	<i>120</i>	<i>204</i>	<i>223</i>	<i>547</i>	<i>61</i>	<i>338</i>	<i>399</i>
Bed spaces	504	819	1,044	2,367	298	2,029	2,327
Employment (persons) (a)	27	70	69	166	17	12	29
UNIT NIGHTS OCCUPIED							
<i>March quarter 1993</i>	<i>6,924</i>	<i>12,893</i>	<i>11,818</i>	<i>31,635</i>	<i>n.p.</i>	<i>n.p.</i>	<i>15,468</i>
<i>1994—</i>							
January	2,572	4,721	5,791	13,084	1,489	7,764	9,253
February	1,817	3,603	3,788	9,208	777	2,829	3,606
March	2,234	4,202	4,112	10,548	993	2,478	3,471
<i>March quarter 1994</i>	<i>6,623</i>	<i>12,526</i>	<i>13,691</i>	<i>32,840</i>	<i>3,259</i>	<i>13,071</i>	<i>16,330</i>
UNIT OCCUPANCY RATES (per cent)							
<i>March quarter 1993</i>	<i>64.1</i>	<i>59.4</i>	<i>63.4</i>	<i>61.9</i>	<i>n.p.</i>	<i>n.p.</i>	<i>45.8</i>
<i>1994—</i>							
January	69.1	74.7	83.8	77.2	78.7	74.1	74.8
February	54.1	63.1	60.7	60.1	45.5	29.9	32.3
March	60.1	66.4	59.5	62.2	52.5	23.6	28.1
<i>March quarter 1994</i>	<i>61.3</i>	<i>68.2</i>	<i>68.2</i>	<i>66.7</i>	<i>59.4</i>	<i>43.0</i>	<i>45.5</i>
UNIT LETTINGS							
<i>March quarter 1993</i>	<i>869</i>	<i>1,962</i>	<i>1,755</i>	<i>4,586</i>	<i>n.p.</i>	<i>n.p.</i>	<i>2,840</i>
<i>1994—</i>							
January	342	638	925	1,905	294	970	1,264
February	248	459	707	1,414	195	487	682
March	305	490	769	1,564	244	510	754
<i>March quarter 1994</i>	<i>895</i>	<i>1,587</i>	<i>2,401</i>	<i>4,883</i>	<i>733</i>	<i>1,967</i>	<i>2,700</i>
AVERAGE LENGTH OF STAY (days)							
<i>March quarter 1993</i>	<i>8.0</i>	<i>6.6</i>	<i>6.7</i>	<i>6.9</i>	<i>n.p.</i>	<i>n.p.</i>	<i>5.4</i>
<i>1994—</i>							
January	7.5	7.4	6.3	6.9	5.1	8.0	7.3
February	7.3	7.8	5.4	6.5	4.0	5.8	5.3
March	7.3	8.6	5.3	6.7	4.1	4.9	4.6
<i>March quarter 1994</i>	<i>7.4</i>	<i>7.9</i>	<i>5.7</i>	<i>6.7</i>	<i>4.4</i>	<i>6.6</i>	<i>6.0</i>
TAKINGS FROM ACCOMMODATION (\$'000)							
<i>March quarter 1993</i>	<i>364</i>	<i>816</i>	<i>791</i>	<i>1,970</i>	<i>n.p.</i>	<i>n.p.</i>	<i>744</i>
<i>1994—</i>							
January	187	303	409	899	79	442	521
February	132	229	241	602	38	120	157
March	159	255	257	672	47	101	148
<i>March quarter 1994</i>	<i>478</i>	<i>788</i>	<i>907</i>	<i>2,172</i>	<i>164</i>	<i>663</i>	<i>827</i>

TABLE 8 — HOLIDAY FLATS, UNITS AND HOUSES: STATISTICAL DIVISIONS AND SELECTED SUBDIVISIONS,
SOUTH AUSTRALIA—continued

Particulars	Yorke and Lower North (SD)	Murray Lands and South East (SDs)	Eyre (SD)	Northern (SD)	South Australia
LETTING ENTITIES, CAPACITY AND EMPLOYMENT					
<i>March quarter 1993—</i>					
Letting entities	9	8	10	5	83
Flats, units and houses					
Single bedroom	43	24	26	8	359
Multiple bedroom	54	121	59	35	954
<i>Total flats, units and houses</i>	<i>97</i>	<i>145</i>	<i>85</i>	<i>43</i>	<i>1,313</i>
Bed spaces	487	856	407	244	6,491
Employment (persons)(a)	24	13	19	16	248
<i>March quarter 1994—</i>					
Letting entities	10	7	9	6	86
Flats, units and houses					
Single bedroom	43	22	25	8	304
Multiple bedroom	62	114	54	47	1,017
<i>Total flats, units and houses</i>	<i>105</i>	<i>136</i>	<i>79</i>	<i>55</i>	<i>1,321</i>
Bed spaces	520	844	367	294	6,719
Employment (persons)(a)	30	10	20	20	275
UNIT NIGHTS OCCUPIED					
<i>March quarter 1993</i>	<i>3,986</i>	<i>4,152</i>	<i>3,554</i>	<i>175</i>	<i>58,970</i>
<i>1994—</i>					
January	1,783	2,916	1,623	90	28,749
February	837	856	625	71	15,203
March	897	688	713	206	16,523
<i>March quarter 1994</i>	<i>3,517</i>	<i>4,460</i>	<i>2,961</i>	<i>367</i>	<i>60,475</i>
UNIT OCCUPANCY RATES (per cent)					
<i>March quarter 1993</i>	<i>45.7</i>	<i>31.8</i>	<i>46.5</i>	<i>4.5</i>	<i>49.9</i>
<i>1994—</i>					
January	54.8	69.2	66.3	5.3	70.2
February	28.5	22.5	28.3	4.6	41.1
March	27.6	16.3	29.1	12.1	40.3
<i>March quarter 1994</i>	<i>37.2</i>	<i>36.4</i>	<i>41.6</i>	<i>7.4</i>	<i>50.9</i>
UNIT LETTINGS					
<i>March quarter 1993</i>	<i>1,184</i>	<i>763</i>	<i>643</i>	<i>81</i>	<i>10,097</i>
<i>1994—</i>					
January	427	326	278	66	4,266
February	258	189	145	34	2,722
March	405	252	182	113	3,270
<i>March quarter 1994</i>	<i>1,090</i>	<i>767</i>	<i>605</i>	<i>213</i>	<i>10,258</i>
AVERAGE LENGTH OF STAY (days)					
<i>March quarter 1993</i>	<i>3.4</i>	<i>5.4</i>	<i>5.5</i>	<i>2.2</i>	<i>5.8</i>
<i>1994—</i>					
January	4.2	8.9	5.8	1.4	6.7
February	3.2	4.5	4.3	2.1	5.6
March	2.2	2.7	3.9	1.8	5.1
<i>March quarter 1994</i>	<i>3.2</i>	<i>5.8</i>	<i>4.9</i>	<i>1.7</i>	<i>5.9</i>
TAKINGS FROM ACCOMMODATION (\$'000)					
<i>March quarter 1993</i>	<i>133</i>	<i>244</i>	<i>161</i>	<i>10</i>	<i>3,263</i>
<i>1994—</i>					
January	76	159	80	8	1,744
February	38	38	28	4	868
March	41	27	33	14	935
<i>March quarter 1994</i>	<i>156</i>	<i>224</i>	<i>141</i>	<i>26</i>	<i>3,546</i>

(a) Employment numbers exclude real estate agents and their employees.

TABLE 9 — CARAVAN PARKS BY STATISTICAL DIVISION, SOUTH AUSTRALIA

Particulars	Adelaide (SD)			Outer Adelaide (SD)			Yorke and Lower North (SD)	Murray Lands (SD)		
	Short-term	Long-term	Total	Short-term	Long-term	Total	Total	Short-term	Long-term	Total
ESTABLISHMENTS, CAPACITY AND EMPLOYMENT										
<i>March quarter 1993—</i>										
Establishments	13	13	26	23	6	29	36	25	9	34
Capacity										
On-site vans	223	53	276	121	37	158	129	134	82	216
Other powered sites	1,202	1,413	2,615	2,267	414	2,681	2,448	1,588	421	2,009
Unpowered sites	308	90	398	1,101	386	1,487	529	828	167	995
Cabins, flats, etc.	185	175	360	189	36	225	154	169	62	231
<i>Total capacity</i>	<i>1,918</i>	<i>1,731</i>	<i>3,649</i>	<i>3,678</i>	<i>873</i>	<i>4,551</i>	<i>3,260</i>	<i>2,719</i>	<i>732</i>	<i>3,451</i>
Sites occupied by long-term guests	151	958	1,109	149	123	272	112	89	130	219
Other sites permanently reserved	16	5	21	511	5	516	575	172	15	187
Employment (persons)	92	72	164	78	14	92	115	69	30	99
<i>March quarter 1994—</i>										
Establishments	12	14	26	22	7	29	36	25	9	34
Capacity										
On-site vans	210	51	261	120	37	157	115	125	75	200
Other powered sites	1,161	1,489	2,650	2,179	415	2,594	2,465	1,596	423	2,019
Unpowered sites	276	129	405	1,055	381	1,436	499	800	169	969
Cabins, flats, etc.	194	175	369	197	32	229	175	176	63	239
<i>Total capacity</i>	<i>1,841</i>	<i>1,844</i>	<i>3,685</i>	<i>3,551</i>	<i>865</i>	<i>4,416</i>	<i>3,254</i>	<i>2,697</i>	<i>730</i>	<i>3,427</i>
Sites occupied by long-term guests	132	953	1,085	132	125	257	116	94	117	211
Other sites permanently reserved	19	13	32	515	4	519	624	249	15	264
Employment (persons)	86	71	157	77	15	92	104	66	28	94
SITE NIGHTS OCCUPIED										
<i>March quarter 1993</i>	<i>88,991</i>	<i>96,443</i>	<i>185,434</i>	<i>106,286</i>	<i>15,749</i>	<i>122,035</i>	<i>119,791</i>	<i>53,041</i>	<i>20,405</i>	<i>73,446</i>
<i>1994—</i>										
January	39,916	34,250	74,166	52,013	5,157	57,170	52,526	23,260	7,252	30,512
February	23,438	30,073	53,511	28,842	4,283	33,125	33,730	16,633	5,803	22,436
March	27,386	33,583	60,969	32,936	5,012	37,948	39,196	18,605	7,163	25,768
<i>March quarter 1994</i>	<i>90,740</i>	<i>97,906</i>	<i>188,646</i>	<i>113,791</i>	<i>14,452</i>	<i>128,243</i>	<i>125,452</i>	<i>58,498</i>	<i>20,218</i>	<i>78,716</i>
SITE OCCUPANCY RATES (per cent)										
March quarter 1993	51.6	61.9	56.5	32.1	20.0	29.8	40.8	21.7	31.0	23.6
<i>1994—</i>										
January	69.9	59.9	64.9	47.2	19.2	41.8	52.1	27.9	32.0	28.8
February	45.5	58.2	51.9	29.0	17.7	26.8	37.0	22.0	28.4	23.4
March	48.0	58.7	53.4	29.9	18.7	27.7	38.9	22.3	31.7	24.3
March quarter 1994	54.8	59.0	56.9	35.6	18.6	32.3	42.8	24.1	30.8	25.5
TAKINGS FROM ACCOMMODATION (\$'000)										
<i>March quarter 1993</i>	<i>1,619</i>	<i>799</i>	<i>2,418</i>	<i>1,121</i>	<i>161</i>	<i>1,282</i>	<i>1,094</i>	<i>567</i>	<i>232</i>	<i>799</i>
<i>1994—</i>										
January	936	299	1,235	670	79	748	539	283	97	380
February	484	256	740	279	55	334	262	143	64	207
March	496	278	774	324	70	394	304	210	87	297
<i>March quarter 1994</i>	<i>1,916</i>	<i>833</i>	<i>2,749</i>	<i>1,273</i>	<i>204</i>	<i>1,477</i>	<i>1,105</i>	<i>636</i>	<i>248</i>	<i>884</i>

TABLE 9 — CARAVAN PARKS BY STATISTICAL DIVISION, SOUTH AUSTRALIA—continued

Particulars	South East (SD)		Eyre (SD)	Northern (SD)	South Australia			
	Short-term	Long-term	Total	Total	Total	Short-term	Long-term	Total
ESTABLISHMENTS, CAPACITY AND EMPLOYMENT								
<i>March quarter 1993—</i>								
Establishments	18	6	24	23	39	171	40	211
Capacity								
On-site vans	91	63	154	87	185	954	251	1,205
Other powered sites	1,525	212	1,737	1,533	1,802	12,093	2,732	14,825
Unpowered sites	583	144	727	864	1,866	5,881	985	6,866
Cabins, flats, etc.	161	36	197	180	223	1,231	339	1,570
<i>Total capacity</i>	<i>2,360</i>	<i>455</i>	<i>2,815</i>	<i>2,664</i>	<i>4,076</i>	<i>20,159</i>	<i>4,307</i>	<i>24,466</i>
Sites occupied by long-term guests	29	68	97	50	164	643	1,380	2,023
Other sites permanently reserved	11	1	12	28	24	1,330	33	1,363
Employment (persons)	85	19	104	111	108	645	148	793
<i>March quarter 1994—</i>								
Establishments	18	6	24	23	38	166	44	210
Capacity								
On-site vans	105	52	157	91	198	934	245	1,179
Other powered sites	1,545	201	1,746	1,543	1,750	11,908	2,859	14,767
Unpowered sites	436	135	571	888	1,784	5,510	1,042	6,552
Cabins, flats, etc.	132	85	217	185	230	1,254	390	1,644
<i>Total capacity</i>	<i>2,218</i>	<i>473</i>	<i>2,691</i>	<i>2,707</i>	<i>3,962</i>	<i>19,606</i>	<i>4,536</i>	<i>24,142</i>
Sites occupied by long-term guests	20	63	83	49	181	604	1,378	1,982
Other sites permanently reserved	19	—	19	49	35	1,505	37	1,542
Employment (persons)	80	25	105	79	118	594	155	749
SITE NIGHTS OCCUPIED								
<i>March quarter 1993</i>	<i>46,245</i>	<i>9,575</i>	<i>55,820</i>	<i>41,885</i>	<i>37,959</i>	<i>483,249</i>	<i>153,121</i>	<i>636,370</i>
<i>1994—</i>								
January	22,071	4,312	26,383	20,607	13,564	219,752	55,176	274,928
February	8,054	2,950	11,004	9,735	11,533	128,068	47,006	175,074
March	9,462	3,535	12,997	13,063	16,300	152,484	53,757	206,241
<i>March quarter 1994</i>	<i>39,587</i>	<i>10,797</i>	<i>50,384</i>	<i>43,405</i>	<i>41,397</i>	<i>500,304</i>	<i>155,939</i>	<i>656,243</i>
SITE OCCUPANCY RATES (per cent)								
March quarter 1993	21.8	23.4	22.0	17.5	10.3	26.6	39.5	28.9
<i>1994—</i>								
January	32.1	29.4	31.6	24.6	11.0	36.2	39.2	36.7
February	13.0	22.3	14.6	12.8	10.4	23.3	37.0	25.9
March	13.8	24.1	15.6	15.6	13.3	25.1	38.2	27.6
March quarter 1994	19.8	25.4	20.8	17.8	11.6	28.4	38.2	30.2
TAKINGS FROM ACCOMMODATION (\$'000)								
<i>March quarter 1993</i>	<i>749</i>	<i>130</i>	<i>878</i>	<i>557</i>	<i>486</i>	<i>6,084</i>	<i>1,430</i>	<i>7,514</i>
<i>1994—</i>								
January	373	74	447	276	174	3,213	587	3,800
February	147	51	199	132	132	1,545	461	2,006
March	179	57	236	176	205	1,854	532	2,386
<i>March quarter 1994</i>	<i>699</i>	<i>182</i>	<i>882</i>	<i>585</i>	<i>511</i>	<i>6,611</i>	<i>1,580</i>	<i>8,192</i>

TABLE 10 — CARAVAN PARKS: STATISTICAL DIVISIONS AND SELECTED SUBDIVISIONS

Statistical Divisions and Selected Subdivisions and Statistical Local Areas	Capacity					Total	Sites occupied by long-term guests	Other sites permanently reserved	Employment (persons)
	Establishments	On-site vans	Other powered sites	Unpowered sites	Cabins, flats, etc.				
Munno Para (C)	3	11	397	15	22	445	335	—	24
Northern (SSD) — Balance	4	12	494	55	51	612	297	—	21
Western and Eastern (SSDs)	5	113	596	156	138	1,003	48	—	53
Noarlunga (C)	5	24	437	34	97	592	279	4	20
Willunga (DC)	4	65	337	79	14	495	39	21	15
Southern (SSD) — Balance	5	36	389	66	47	538	87	7	24
<i>Adelaide (SD)</i>	<i>26</i>	<i>261</i>	<i>2,650</i>	<i>405</i>	<i>369</i>	<i>3,685</i>	<i>1,085</i>	<i>32</i>	<i>157</i>
Barossa (SSD)	8	49	662	625	47	1,383	90	9	30
Kangaroo Island (SSD)	4	18	93	67	19	197	1	1	8
Port Elliot and Goolwa (DC)	5	39	537	177	66	819	31	119	17
Yankalilla (DC)	4	7	413	145	29	594	9	189	7
Onkaparinga (SSD) and Fleurieu (SSD) — Balance	8	44	889	422	68	1,423	126	201	30
<i>Outer Adelaide (SD)</i>	<i>29</i>	<i>157</i>	<i>2,594</i>	<i>1,436</i>	<i>229</i>	<i>4,416</i>	<i>257</i>	<i>519</i>	<i>92</i>
Central Yorke Peninsula (DC)	7	25	399	63	26	513	25	249	20
Minlaton (DC)	4	13	294	56	16	379	13	54	12
Yorketown (DC)	5	24	496	100	16	636	27	134	12
Yorke (SSD) — Balance	11	42	973	83	79	1,177	33	163	38
Lower North (SSD)	9	11	303	197	38	549	18	24	22
<i>Yorke and Lower North (SD)</i>	<i>36</i>	<i>115</i>	<i>2,465</i>	<i>499</i>	<i>175</i>	<i>3,254</i>	<i>116</i>	<i>624</i>	<i>104</i>
Riverland (SSD)	13	130	1,091	477	129	1,827	152	71	51
Meningie (DC)	6	21	273	246	41	581	7	5	17
Murray Bridge (RC)	6	37	230	109	37	413	33	32	13
Murray Mallee (SSD) — Balance	9	12	425	137	32	606	19	156	13
<i>Murray Lands (SD)</i>	<i>34</i>	<i>200</i>	<i>2,019</i>	<i>969</i>	<i>239</i>	<i>3,427</i>	<i>211</i>	<i>264</i>	<i>94</i>
Robe (DC)	3	13	333	100	34	480	1	3	23
Upper South East (SSD) — Balance	7	48	325	189	11	573	19	7	30
Mount Gambier (DC)	4	12	185	60	105	362	28	—	19
Lower South East (SSD) — Balance	10	84	903	222	67	1,276	35	9	33
<i>South East (SD)</i>	<i>24</i>	<i>157</i>	<i>1,746</i>	<i>571</i>	<i>217</i>	<i>2,691</i>	<i>83</i>	<i>19</i>	<i>105</i>
Lincoln (SSD)	14	69	1,004	499	96	1,668	42	46	45
West Coast (SSD)	9	22	539	389	89	1,039	7	3	34
<i>Eyre (SD)</i>	<i>23</i>	<i>91</i>	<i>1,543</i>	<i>888</i>	<i>185</i>	<i>2,707</i>	<i>49</i>	<i>49</i>	<i>79</i>
Port Pirie (C)	3	28	110	75	9	222	17	1	5
Pirie (SSD) — Balance	7	21	212	150	12	395	11	4	13
Mount Remarkable (DC)	4	13	144	210	12	379	3	8	8
Port Augusta (C)	3	34	242	160	64	500	33	8	18
Unincorporated Flinders Ranges	4	6	93	213	7	319	2	—	13
Flinders Ranges (SSD) — Balance	4	32	237	170	25	464	2	4	13
Unincorporated Far North	7	11	177	468	42	698	—	—	26
Far North (SSD) — Balance and Whyalla (SSD)	6	53	535	338	59	985	113	10	22
<i>Northern (SD)</i>	<i>38</i>	<i>198</i>	<i>1,750</i>	<i>1,784</i>	<i>230</i>	<i>3,962</i>	<i>181</i>	<i>35</i>	<i>118</i>
<i>South Australia</i>									
Short-term parks	166	934	11,908	5,510	1,254	19,606	604	1,505	594
Long-term parks	44	245	2,859	1,042	390	4,536	1,378	37	155
<i>Total</i>	<i>210</i>	<i>1,179</i>	<i>14,767</i>	<i>6,552</i>	<i>1,644</i>	<i>24,142</i>	<i>1,982</i>	<i>1,542</i>	<i>749</i>

AND STATISTICAL LOCAL AREAS, SOUTH AUSTRALIA, MARCH QUARTER 1994

<i>Site nights occupied</i>				<i>Site occupancy rates (per cent)</i>				<i>Takings from accommodation (\$'000)</i>			
<i>Jan.</i>	<i>Feb.</i>	<i>Mar.</i>	<i>Mar. qtr</i>	<i>Jan.</i>	<i>Feb.</i>	<i>Mar.</i>	<i>Mar. qtr</i>	<i>Jan.</i>	<i>Feb.</i>	<i>Mar.</i>	<i>Mar. qtr</i>
10,532	9,480	10,555	30,567	76.3	76.1	76.5	76.3	68	73	77	218
10,836	10,461	11,711	33,008	57.1	61.0	61.7	59.9	85	83	91	258
26,838	15,087	18,300	60,225	86.3	53.7	58.9	66.7	689	352	348	1,390
10,659	8,517	9,399	28,575	58.1	51.4	51.2	53.6	117	84	92	294
4,158	2,665	3,120	9,943	27.1	19.2	20.3	22.3	63	33	40	136
11,143	7,301	7,884	26,328	66.8	48.5	47.3	54.4	213	115	126	454
74,166	53,511	60,969	188,646	64.9	51.9	53.4	56.9	1,235	740	774	2,749
5,724	4,010	6,467	16,201	13.4	10.4	15.1	13.0	78	54	95	227
1,964	1,028	1,207	4,199	32.2	18.6	19.8	23.7	35	16	21	72
16,894	7,706	7,735	32,335	66.5	33.6	30.5	43.9	229	72	67	369
11,050	7,364	7,958	26,372	60.0	44.3	43.2	49.3	125	55	59	238
21,538	13,017	14,581	49,136	48.8	32.7	33.1	38.4	281	136	152	570
57,170	33,125	37,948	128,243	41.8	26.8	27.7	32.3	748	334	394	1,477
12,389	10,172	11,061	33,622	77.9	70.8	69.6	72.8	90	46	49	184
6,660	3,677	3,763	14,100	56.7	34.6	32.0	41.3	72	28	28	129
11,374	7,060	8,491	26,925	57.7	39.6	43.1	47.0	97	54	58	208
19,210	10,561	12,270	42,041	52.6	32.0	33.6	39.7	249	114	127	490
2,893	2,260	3,611	8,764	17.0	14.7	21.2	17.7	31	20	42	94
52,526	33,730	39,196	125,452	52.1	37.0	38.9	42.8	539	262	304	1,105
18,130	12,468	14,519	45,117	32.0	24.4	25.6	27.4	268	139	213	620
1,936	1,323	1,579	4,838	10.7	8.1	8.8	9.3	33	18	22	73
3,504	2,894	2,971	9,369	27.4	25.0	23.2	25.2	29	23	25	77
6,942	5,751	6,699	19,392	37.3	33.9	35.7	35.7	49	27	36	113
30,512	22,436	25,768	78,716	28.8	23.4	24.3	25.5	380	207	297	884
7,763	2,041	1,798	11,602	52.2	15.2	12.1	26.9	144	41	36	221
3,523	2,276	2,746	8,545	19.8	14.2	15.5	16.6	55	32	45	132
3,480	1,967	2,609	8,056	31.0	19.4	23.2	24.7	66	42	56	164
11,617	4,720	5,844	22,181	29.4	13.2	14.8	19.3	182	84	98	364
26,383	11,004	12,997	50,384	31.6	14.6	15.6	20.8	447	199	236	882
14,273	6,461	8,157	28,891	27.6	13.8	15.8	19.2	188	75	103	365
6,334	3,274	4,906	14,514	19.7	11.3	15.2	15.5	88	57	74	219
20,607	9,735	13,063	43,405	24.6	12.8	15.6	17.8	276	132	176	585
966	1,237	1,377	3,580	14.0	19.9	20.0	17.9	12	13	14	39
877	715	991	2,583	7.2	6.5	8.1	7.3	11	9	11	31
849	535	1,130	2,514	7.2	5.0	9.6	7.4	10	5	15	30
3,629	2,879	3,962	10,470	23.4	20.6	25.6	23.3	53	37	54	144
175	136	359	670	1.8	1.5	3.6	2.3	2	1	3	6
510	432	931	1,873	3.5	3.3	6.5	4.5	12	9	22	43
1,166	514	1,182	2,862	5.4	2.6	5.5	4.6	17	8	18	42
5,392	5,085	6,368	16,845	17.7	18.4	20.9	19.0	57	51	68	176
13,564	11,533	16,300	41,397	11.0	10.4	13.3	11.6	174	132	205	511
219,752	128,068	152,484	500,304	36.2	23.3	25.1	28.4	3,213	1,545	1,854	6,611
55,176	47,006	53,757	155,939	39.2	37.0	38.2	38.2	587	461	532	1,580
274,928	175,074	206,241	656,243	36.7	25.9	27.6	30.2	3,800	2,006	2,386	8,192

TABLE 11 — VISITOR HOSTELS BY STATISTICAL DIVISION, SOUTH AUSTRALIA

<i>Particulars</i>	<i>Adelaide (SD)</i>	<i>Outer Adelaide (SD)</i>	<i>Northern (SD)</i>	<i>Balance of State</i>	<i>South Australia</i>
ESTABLISHMENTS, CAPACITY AND EMPLOYMENT					
<i>March quarter 1993—</i>					
Establishments	17	7	8	9	41
Bed spaces	843	178	651	298	1,970
Employment (persons)	66	22	24	15	127
<i>March quarter 1994—</i>					
Establishments	17	8	10	9	44
Bed spaces	867	232	737	262	2,098
Employment (persons)	59	28	41	16	144
GUEST NIGHTS					
<i>March quarter 1993</i>	<i>43,132</i>	<i>5,308</i>	<i>5,336</i>	<i>5,308</i>	<i>59,084</i>
<i>1994—</i>					
January	15,593	2,031	3,313	2,058	22,995
February	14,323	1,918	2,522	1,893	20,656
March	15,106	1,955	3,953	2,424	23,438
<i>March quarter 1994</i>	<i>45,022</i>	<i>5,904</i>	<i>9,788</i>	<i>6,375</i>	<i>67,089</i>
BED OCCUPANCY RATES (per cent)					
<i>March quarter 1993</i>	<i>57.9</i>	<i>33.1</i>	<i>9.1</i>	<i>19.8</i>	<i>33.6</i>
<i>1994—</i>					
January	58.0	28.2	14.5	25.3	35.4
February	59.0	29.5	12.2	25.8	35.2
March	56.2	27.2	17.3	29.8	36.0
<i>March quarter 1994</i>	<i>57.7</i>	<i>28.3</i>	<i>14.8</i>	<i>27.0</i>	<i>35.5</i>
GUEST ARRIVALS					
<i>March quarter 1993</i>	<i>21,665</i>	<i>3,680</i>	<i>4,535</i>	<i>2,262</i>	<i>32,142</i>
<i>1994—</i>					
January	5,204	1,616	3,145	868	10,833
February	4,928	1,392	2,256	865	9,441
March	5,199	1,416	3,440	1,150	11,205
<i>March quarter 1994</i>	<i>15,331</i>	<i>4,424</i>	<i>8,841</i>	<i>2,883</i>	<i>31,479</i>
AVERAGE LENGTH OF STAY (days)					
<i>March quarter 1993</i>	<i>2.0</i>	<i>1.4</i>	<i>1.2</i>	<i>2.3</i>	<i>1.8</i>
<i>1994—</i>					
January	3.0	1.3	1.1	2.4	2.1
February	2.9	1.4	1.1	2.2	2.2
March	2.9	1.4	1.1	2.1	2.1
<i>March quarter 1994</i>	<i>2.9</i>	<i>1.3</i>	<i>1.1</i>	<i>2.2</i>	<i>2.1</i>
TAKINGS FROM ACCOMMODATION (\$'000)					
<i>March quarter 1993</i>	<i>464</i>	<i>50</i>	<i>46</i>	<i>38</i>	<i>598</i>
<i>1994—</i>					
January	166	20	24	17	228
February	163	19	21	16	218
March	157	19	32	19	227
<i>March quarter 1994</i>	<i>486</i>	<i>59</i>	<i>76</i>	<i>52</i>	<i>673</i>

EXPLANATORY NOTES

INTRODUCTION

1 This publication contains data for South Australia from a quarterly survey of tourist accommodation establishments. The period covered by the latest survey is the 3 months ended 31 March 1994.

SCOPE

2 Tourist accommodation establishments currently included in the survey comprise two groups:

- Establishments which provide predominantly short-term accommodation (i.e. for periods of less than 2 months) to the general public. These include:

Hotels, motels and guest houses, with facilities being hotels licensed to operate a public bar and motels, private hotels and guest houses all of which provide a bath (or shower) and toilet in most guest rooms and have breakfast available for guests.

NOTE: From December quarter 1993, hotel, motel and guest house establishments with fewer than five rooms have been formally excluded from the scope of this statistical collection. This change in scope resulted in the exclusion of 16 establishments which in the September quarter 1993 Survey aggregates for South Australia represented 4.5 per cent of hotel, motel and guest house establishments but accounted for less than 0.6 per cent of accommodation capacity, occupancy and takings respectively.

Holiday flats, units and houses (excluding establishments predominantly operated on a time share basis) which are operated by owners or managers who have sole letting rights to at least five flats, units or houses or by real estate agents for short-term letting. They are mainly self-contained in terms of cooking, bath (or shower) and toilet facilities and do not have breakfast available for guests. Data for holiday flats, units and houses include short-term owner occupation as well as paying guest occupation.

Visitor hostels which provide accommodation to visitors on a bed basis (rather than by the room). This category does not include establishments providing charity type accommodation (e.g. Salvation Army hostels) nor hotels, motels and guest houses without in-room facilities which provide accommodation on a per room basis.

- *Caravan parks* which provide either predominantly short-term (i.e. for periods of less than 2 months) or predominantly long-term (i.e. for periods of 2 months or more) accommodation to the general public and which provide powered sites for caravans and toilet, shower and laundry facilities for guests.

3 Data collected and published for each type of establishment (other than holiday flats, units and houses) include both long-term and short-term guests at these establishments.

4 Establishments which provide more than one type of accommodation (e.g. a motel with attached caravan park) are treated as two or more separate establishments. However, self-contained units, flats, cabins, etc. attached to hotels, motels or to caravan parks are included in the capacity for those establishments and not treated as separate holiday flat, unit or house establishments.

DEFINITIONS

5 *Number of establishments.* For hotels, motels and guest houses, caravan parks and visitor hostels, the number of establishments within the scope of the survey which operated for any part of the survey period, or which closed temporarily for the quarter for seasonal reasons.

6 *Number of letting entities.* For holiday flats, units and houses, the number of owners, managers or real estate agents within the scope of the survey who operated for any part of the survey period.

7 Capacity in terms of *Guest rooms, Bed spaces, Holiday units* or *Caravan park sites, etc.* is the maximum number available to accommodate paying guests during the survey period. Capacity closed temporarily for seasonal reasons is included.

8 *Bed spaces.* Three-quarter beds are counted as one bed space; double beds as two bed spaces. Cots are excluded.

9 *Total caravan park capacity* comprises *On-site vans, Other powered sites, Unpowered sites* and *Cabins, etc.*

EXPLANATORY NOTES—*continued*DEFINITIONS—*continued*

10 *Room nights available.* The number of guest rooms available multiplied by the number of days for which they were available during the survey period. Includes operating periods only for establishments closing (other than for seasonal reasons) or opening during the survey period.

11 Occupancy in terms of *Room nights*, *Unit nights* or *Site nights occupied* refers to the total number of nights each guest room, holiday unit or caravan park site, etc. was occupied during the survey period.

NOTE: From September quarter 1992, caravan park sites, etc. permanently reserved for 2 months or more at the end of the survey period but only casually occupied by their tenants have been recorded continuously as *Site nights occupied* irrespective of whether the tenants of individual sites were in residence on any particular night. (See also paragraph 14 below). Previously, usage of these sites was recorded as *Site nights occupied* only when their tenants were in the park. Total site occupancy rates from September quarter 1992 are therefore not comparable with those from previous quarters.

12 Occupancy in terms of *Guest nights* refers to the total number of nights each paying guest stayed during the survey period.

13 *Sites occupied by long-term guests.* The total number of sites, etc. occupied at the end of the survey period by guests who have stayed continuously for 2 months or more.

14 *Other sites permanently reserved.* The total number of powered and unpowered sites, on-site vans and cabins, etc. continuously let for 2 months or more by the end of the survey period to tenants who occupy the sites only on a casual or sporadic basis. Separate data for this item are available only from September quarter 1992.

15 *Occupancy rates* represent occupancy expressed as a percentage of total capacity available during the survey period – e.g.

$$\text{Room occupancy rate (\%)} \text{ for the period} = \frac{\text{Room nights occupied}}{(\text{Guest rooms}) \times (\text{No. of days in the period})} \times 100$$

providing that, for establishments closing (other than for seasonal reasons) or opening during the period, the denominator of the above expression includes only operating periods.

16 *Guest arrivals.* The total number of paying guests counted only on the first night they stayed at the accommodation establishment.

17 *Unit lettings.* The total number of times a holiday flat, unit or house was occupied by a new tenant, counted only on the first night it was occupied by the new tenant.

18 *Average length of stay* is expressed in number of days and calculated:

- for hotels, motels and guest houses and for visitor hostels, by dividing *Guest nights* by *Guest arrivals* and
- for holiday flats, units and houses, by dividing *Unit nights occupied* by *Unit lettings*.

19 *Takings from accommodation.* Revenue received from the provision of accommodation. Takings from meals are excluded. Takings from accommodation for each month generally represent the takings received during that month. Where payments are received in advance of, or after, the provision of accommodation to guests, the monthly figure for takings from accommodation may not necessarily bear a direct relationship to the number of guests accommodated during the month. Rental and storage fees paid to caravan parks for the keeping of private vans in parks are included in the takings of the month they are received.

20 *Star grading.* The grading of hotels and motels with facilities based on the classification system used by members of the Australian Automobile Association (AAA). The gradings are allocated according to a points system based on the amenities and facilities available to guests. Details of the grading scheme are contained in the RACV-RAASA members' publication *Accommodation Australia*, or the individual tour guides produced by members of the AAA. For the purpose of classifying establishments to a star

EXPLANATORY NOTES—continued

grading in this publication, 'half' star gradings are ignored (e.g. a two and a half star grading has been shown as two star).

21 *Employment.* The number of persons working at accommodation establishments at the end of the survey period (including working proprietors and those working on other than accommodation activities).

AUSTRALIAN STANDARD
GEOGRAPHICAL
CLASSIFICATION

22. Statistics presented in this publication have been classified according to the Australian Standard Geographical Classification (ASGC), Edition 2.3. This classification incorporates a number of hierarchic structures of geographic areas. The appropriate spatial units of the main structure of the ASGC used in this publication are shown in the appendix and are defined as follows.

Statistical Local Areas (SLAs) are legal local government areas or equivalent spatial units which serve as the smallest type of spatial unit considered appropriate for the presentation of statistics. In aggregate, SLAs cover the whole of the State without gaps or overlaps.

Statistical Subdivisions (SSDs). These consist of one or more SLAs and form the intermediate size spatial unit for the presentation of regional data.

Statistical Divisions (SDs). These consist of one or more SSDs. The divisions are designed to be relatively homogeneous regions characterised by identifiable social and economic units within the region, under the unifying influence of one or more major towns or cities.

For more detailed information, refer to the ASGC (1216.0).

UNPUBLISHED STATISTICS

23 The ABS may make available on request certain unpublished tourist accommodation statistics. A charge may be made for this information.

RELATED PUBLICATIONS

24 Publications for Australia, and each State and Territory, are released by the respective offices of the ABS. Tourist accommodation statistics for past quarters are available on request.

25 Other ABS publications which may be of interest include:

Directory of Tourism Statistics, 1991 (1130.0) (irregular)

Overseas Arrivals and Departures, Australia (3401.0) (monthly)

Tourism Indicators Australia (8634.0) (quarterly)

Tourist Accommodation, Australia (8635.0) (quarterly)

26 Current publications produced by the ABS are listed in the *Catalogue of Publications and Products (1101.0)*. The ABS also issues the *Publications Advice (1105.0)* on Tuesdays and Fridays which lists publications to be released in the next few days. Both the *Catalogue* and *Publications Advice* are available from any ABS office.

SYMBOLS AND
OTHER USAGES

n.a. not available

n.p. not available for publication but included in totals where applicable

r figure or series revised since previous issue

.. not applicable

— nil or rounded to zero

(C) Municipality with city status

(DC) District council

(M) Municipality

(RC) Rural City

27 Where figures have been rounded, discrepancies may occur between totals and the sums of the component items.

P. M. GARDNER
Deputy Commonwealth Statistician
and Government Statist

APPENDIX

STATISTICAL DIVISIONS, STATISTICAL SUB DIVISIONS AND STATISTICAL LOCAL AREAS,
SOUTH AUSTRALIA**ADELAIDE***Northern*

Elizabeth (C)
 Enfield (C) – Pt A
 Gawler (M)
 Munno Para (C)
 Salisbury (C)
 Tea Tree Gully (C)

Western

Enfield (C) – Pt B
 Henley & Grange (C)
 Hindmarsh (M)
 Port Adelaide (C)
 Thebarton (M)
 West Torrens (C)
 Woodville (C)
 Unincorporated Western

Eastern

Adelaide (C)
 Burnside (C)
 Campbelltown (C)
 East Torrens (DC)
 Kensington & Norwood (C)
 Payneham (C)
 Prospect (C)
 St Peters (M)
 Stirling (DC)
 Unley (C)
 Walkerville (M)

Southern

Brighton (C)
 Glenelg (C)
 Happy Valley (C)
 Marion (C)
 Mitcham (C)
 Noarlunga (C)
 Willunga (DC)

OUTER ADELAIDE*Barossa*

Angaston (DC)
 Barossa (DC)
 Gumeracha (DC)
 Kapunda (DC)
 Light (DC)
 Mallala (DC)
 Mount Pleasant (DC)
 Tanunda (DC)

Kangaroo Island

Dudley (DC)
 Kingscote (DC)

Onkaparinga

Mount Barker (DC)
 Onkaparinga (DC)

Fleurieu

Port Elliot & Goolwa (DC)
 Strathalbyn (DC)
 Victor Harbor (DC)
 Yankalilla (DC)

YORKE AND LOWER NORTH*Yorke*

Bute (DC)
 Central Yorke Peninsula (DC)
 Minlaton (DC)
 Northern Yorke Peninsula (DC)
 Port Broughton (DC)
 Wallaroo (M)
 Warooka (DC)
 Yorketown (DC)
 Unincorporated Yorke

Lower North

Blyth-Snowtown (DC)
 Burra Burra (DC)
 Clare (DC)
 Eudunda (DC)
 Riverton (DC)
 Robertstown (DC)
 Saddleworth & Auburn (DC)
 Spalding (DC)
 Wakefield Plains (DC)

MURRAY LANDS*Riverland*

Barmera (DC)
 Berri (DC)
 Browns Well (DC)
 Loxton (DC)
 Morgan (DC)
 Paringa (DC)
 Renmark (M)
 Waikerie (DC)
 Unincorporated Riverland

Murray Mallee

Coonalpyn Downs (DC)
 Karoonda-East Murray (DC)
 Lameroo (DC)
 Mannum (DC)
 Meningie (DC)
 Murray Bridge (DC)
 Peake (DC)
 Pinnaroo (DC)
 Ridley-Truro (DC)
 Unincorporated Murray Mallee

SOUTH EAST*Upper South East*

Lacepede (DC)
 Lucindale (DC)
 Naracoorte (M)
 Naracoorte (DC)
 Robe (DC)
 Tatiara (DC)

Lower South East

Beachport (DC)
 Millicent (DC)
 Mount Gambier (C)
 Mount Gambier (DC)
 Penola (DC)
 Port MacDonnell (DC)

EYRE*Lincoln*

Cleve (DC)
 Elliston (DC)
 Franklin Harbor (DC)
 Kimba (DC)
 Le Hunte (DC)
 Lower Eyre Peninsula (DC)
 Port Lincoln (C)
 Tumby Bay (DC)
 Unincorporated Lincoln

West Coast

Murat Bay (DC)
 Streaky Bay (DC)
 Unincorporated West Coast

NORTHERN*Whyalla*

Whyalla (C)
 Unincorporated Whyalla

Pirie

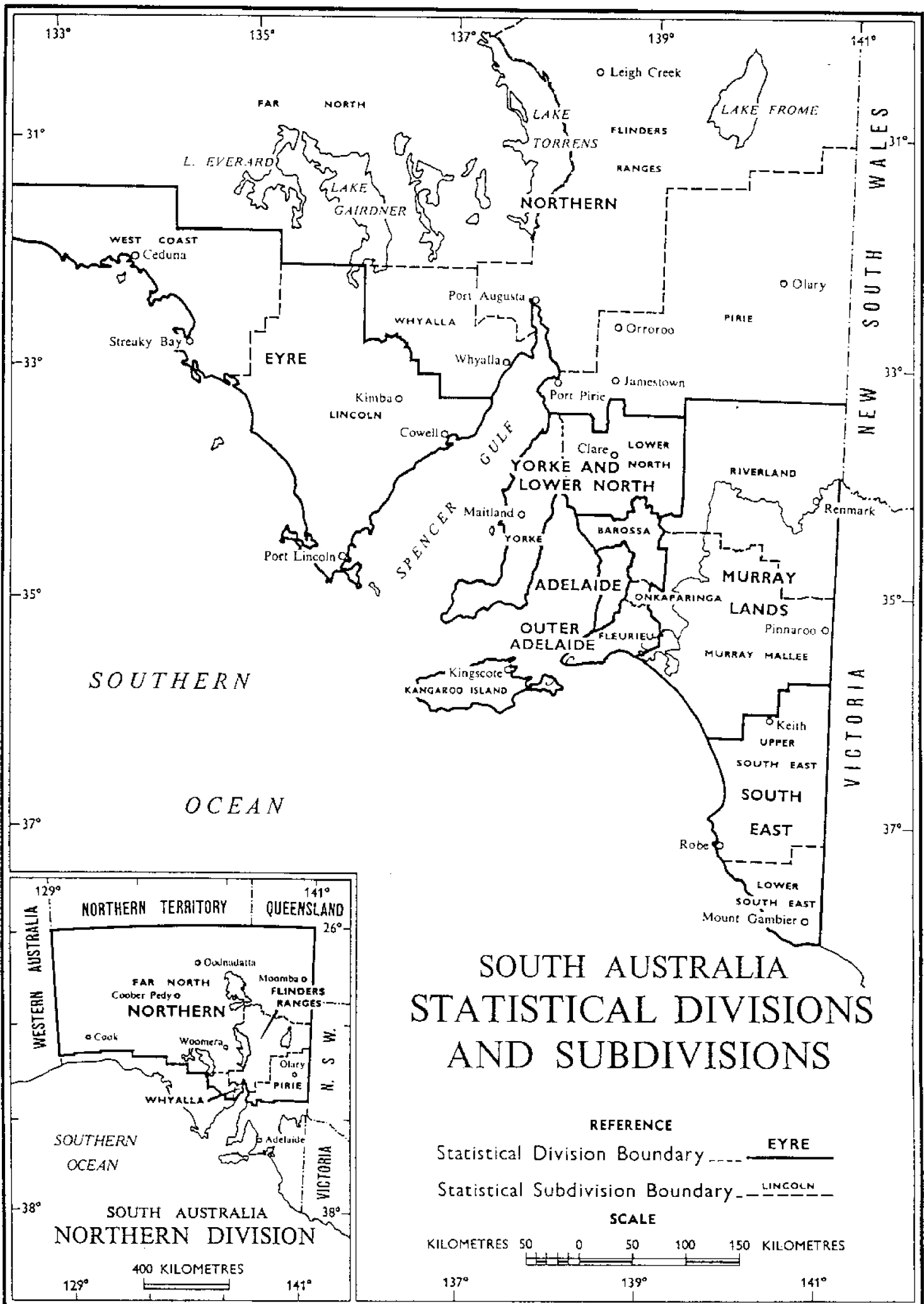
Crystal Brook-Redhill (DC)
 Hallett (DC)
 Jamestown (DC)
 Orreroo (DC)
 Peterborough (M)
 Peterborough (DC)
 Pirie (DC)
 Port Pirie (C)
 Rocky River (DC)
 Unincorporated Pirie

Flinders Ranges

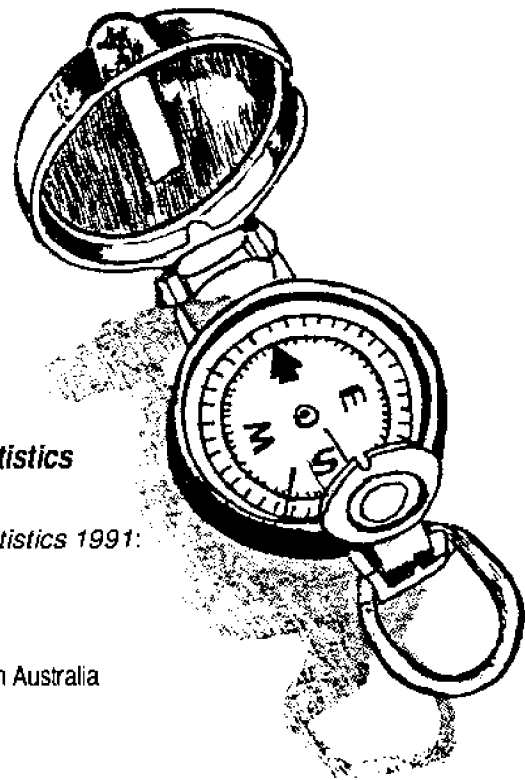
Carrieton (DC)
 Hawker (DC)
 Kanyaka-Quorn (DC)
 Mount Remarkable (DC)
 Port Augusta (C)
 Unincorporated Flinders Ranges

Far North

Coober Pedy (DC)
 Roxby Downs (M)
 Unincorporated Far North



DIRECTORY OF TOURISM STATISTICS 1991



Suitable for the Experienced Researcher or Occasional User of Tourism Statistics

An essential tool for tourism business decisions, the *Directory of Tourism Statistics 1991*:

- ◆ offers **quick reference** sources of tourism data
- ◆ provides a **comprehensive** listing of public sector statistical data sources available within Australia
- ◆ **provides** appropriate contact details
- ◆ **presents** data to illustrate the uses of the surveys presented
- ◆ **outlines** industry standard definitions and measures of tourism activity, for survey designers.

For Your Copy Mail Or Fax Us Today Or Telephone Direct On (08) 237 7582

ORDER FORM

Return your completed order form to:

**ABS Bookshop
GPO Box 2272
ADELAIDE SA 5001
(08) 237 7566**

or fax a photocopy of this order form to:

I wish to purchase copies of the *Directory of Tourism Statistics, 1991* (Catalogue No. 1130.0) at \$49.50 per copy.

Please find enclosed my cheque or money order for \$.....

(Cheques/money orders should be made payable to *The Collector of Public Moneys*)

OR

Please debit my Bankcard Mastercard Visa for \$.....

Card No. _____ Expiry date ____ / ____ / ____

Name on card _____

Signature _____

POST TO:

Name _____

Organisation _____

Type of business _____

Address _____

_____ Postcode _____ Phone _____



For more information ...

The ABS publishes a wide range of information on Australia's economic and social conditions. A catalogue of publications and products is available from any of our Offices (see below for contact details).

Information Consultancy Service

Special tables or in-depth data investigations are provided by the ABS Information Consultancy Service in each of our Offices (see below for contact details).

Electronic Data Services

A growing range of our data is available on electronic media. Our PC TELESTATS service delivers major economic indicator publications ready to download into your computer on the day of release. Our PC AUSSTATS service enables on-line access to a data base of thousands of up-to-date time series. Selected data sets are also available on diskette or CD-ROM. For more details on our electronic data services, contact Information Services in any of our Offices on the numbers below.

Bookshops and Subscriptions

There are over 400 titles available from the ABS Bookshops in each of our Offices. You can also receive any of our publications on a regular basis. Join our subscription mailing service and have your publications mailed to you in Australia at no additional cost. Telephone our Publications Subscription Service toll free on 008 02 06 08 Australia wide.

Sales and Inquiries

55 Currie Street, Adelaide



SYDNEY (02) 268 4611
MELBOURNE (03) 615 7000
BRISBANE (07) 222 6351
PERTH (09) 323 5140

ADELAIDE (08) 237 7100
HOBART (002) 20 5800
DARWIN (089) 43 2111
CANBERRA (06) 207 0326

NATIONAL OFFICE (CANBERRA) (06) 252 6007



Information Services, ABS, GPO Box 2272, ADELAIDE SA 5001
or any ABS Office.

